



**COMPUTER FREEHOLD REGISTER
UNDER LAND TRANSFER ACT 1952**



Search Copy


R. W. Muir
Registrar-General
of Land

Identifier **CB15F/1021**
Land Registration District **Canterbury**
Date Issued 26 September 1975

Prior References
CB395/87

Estate Fee Simple
Area 3.9249 hectares more or less
Legal Description Lot 2 Deposited Plan 31008
Proprietors
Buxton Gore Bay Limited

Interests

1134 Order in Council imposing Building Line Restriction - 12.9.1930 at 3.00 pm

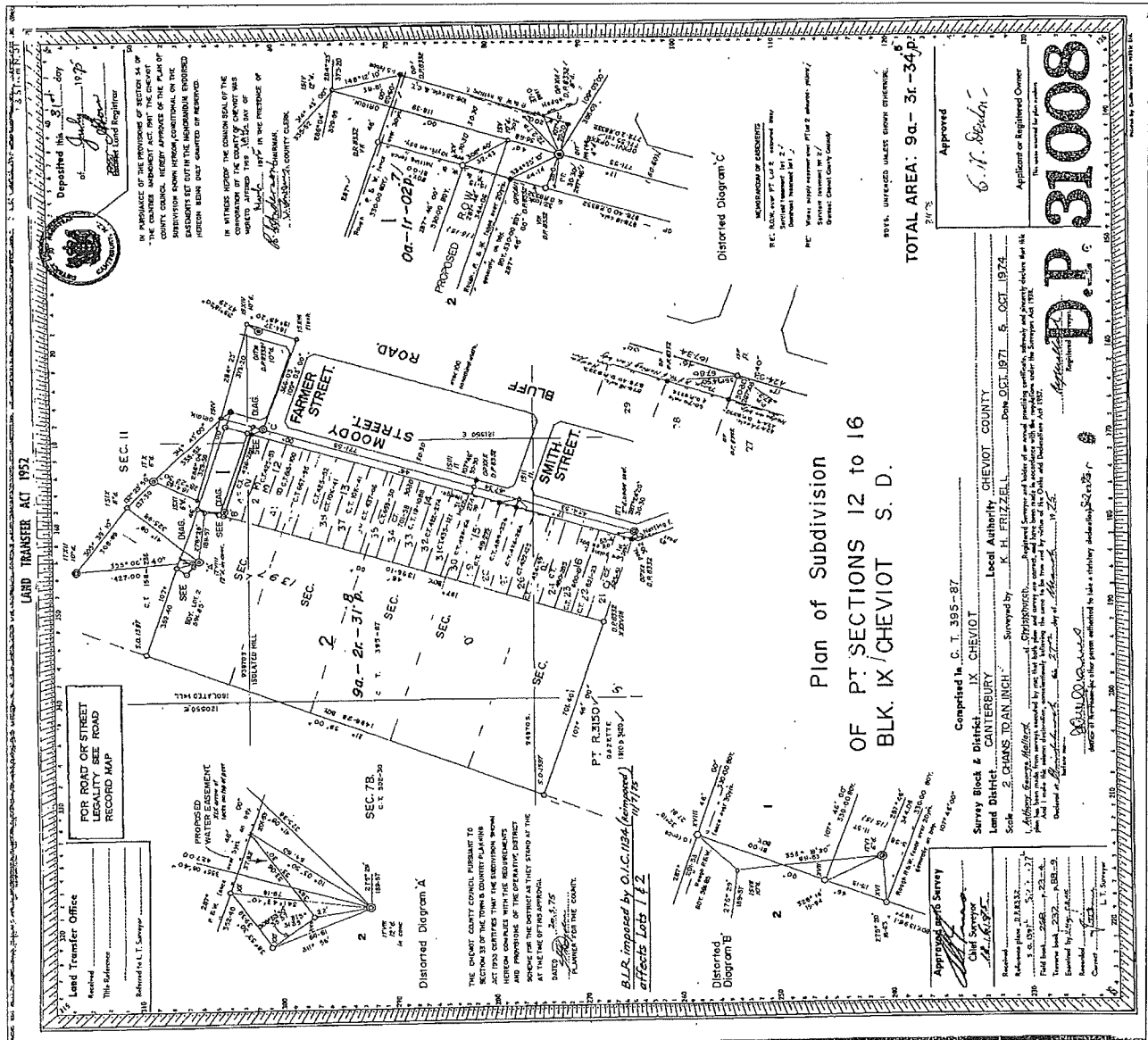
52608.1 Easement Certificate specifying the following easement - 26.9.1975 at 1.40 pm

Type	Servient Tenement	Easement Area	Dominant Tenement	Statutory Restriction
Right of way	Lot 2 Deposited Plan 31008 - herein	Blue DP 31008	Lot 1 Deposited Plan 31008 - CT CB15F/1020	

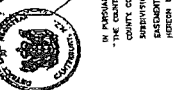
The easement specified in Easement Certificate 52608.1 is subject to Section 37(1)(a) Counties Amendment Act 1961

270489.1 Transfer creating the following easement in gross - 17.4.1980 at 11.21 am

Type	Servient Tenement	Easement Area	Grantee	Statutory Restriction
Convey water	Lot 2 Deposited Plan 31008 - herein	Part herein	The Cheviot County Council	



Deposited this 31st day of July 1972
 of [Signature]
 Register



IN PURSUANCE OF THE PROVISIONS OF SECTION 54 OF THE CONSTITUTION OF THE STATE OF MISSOURI, THE UNDERSIGNED, COUNTY CLERK OF THE COUNTY OF CHEVOT, MISSOURI, DO HEREBY CERTIFY THAT THE FOREGOING MAP OR MAPS, SHOWING THE SUBDIVISION OF LAND, HAS OR HAVE BEEN FILED IN THE OFFICE OF THE COUNTY CLERK, IN THE PRESENCE OF ME, AND THAT THE SAME IS OR ARE TRUE AND CORRECT COPIES OF THE ORIGINAL MAP OR MAPS, AS THE SAME APPEAR ON THE RECORDS OF THE COUNTY CLERK.

IN WITNESS WHEREOF, THE COMMON SEAL OF THE COUNTY OF CHEVOT, MISSOURI, IS HEREBY AFFIXED, AND MY HAND AND SEAL OF OFFICE ARE HEREBY SET TO THE FOREGOING MAP OR MAPS, AT THE CITY OF CHEVOT, MISSOURI, THIS 31st DAY OF JULY, 1972.

THE CHEVOT COUNTY COUNCIL PURSUANT TO SECTION 38 OF THE TOWNSHIP ACT PLANNED ACT 1933 CERTIFIES THAT THE SUBDIVISION SHOWN HEREON COMPLETES WITH THE RECORDING, WHICH IS THE SAME AS THE ORIGINAL AS THEY STAND AT THE TIME OF THIS APPROVAL.

DATED: [Date]
 PLUMMER FOR THE COUNTY

BLR imposed by O.L.C. 1234 (amended) affects Lots 1 & 2

FOR ROAD OF STREET LEGALITY SEE ROAD RECORD MAP

Lead Transfer Office
 This reference [Signature]
 Referred to L.T. Sawyer

Approved and Surveyed
 Chief Surveyor
 [Signature]

Reference plates: 227A330, 227A331, 227A332, 227A333, 227A334, 227A335, 227A336, 227A337, 227A338, 227A339, 227A340, 227A341, 227A342, 227A343, 227A344, 227A345, 227A346, 227A347, 227A348, 227A349, 227A350, 227A351, 227A352, 227A353, 227A354, 227A355, 227A356, 227A357, 227A358, 227A359, 227A360, 227A361, 227A362, 227A363, 227A364, 227A365, 227A366, 227A367, 227A368, 227A369, 227A370, 227A371, 227A372, 227A373, 227A374, 227A375, 227A376, 227A377, 227A378, 227A379, 227A380, 227A381, 227A382, 227A383, 227A384, 227A385, 227A386, 227A387, 227A388, 227A389, 227A390, 227A391, 227A392, 227A393, 227A394, 227A395, 227A396, 227A397, 227A398, 227A399, 227A400, 227A401, 227A402, 227A403, 227A404, 227A405, 227A406, 227A407, 227A408, 227A409, 227A410, 227A411, 227A412, 227A413, 227A414, 227A415, 227A416, 227A417, 227A418, 227A419, 227A420, 227A421, 227A422, 227A423, 227A424, 227A425, 227A426, 227A427, 227A428, 227A429, 227A430, 227A431, 227A432, 227A433, 227A434, 227A435, 227A436, 227A437, 227A438, 227A439, 227A440, 227A441, 227A442, 227A443, 227A444, 227A445, 227A446, 227A447, 227A448, 227A449, 227A450, 227A451, 227A452, 227A453, 227A454, 227A455, 227A456, 227A457, 227A458, 227A459, 227A460, 227A461, 227A462, 227A463, 227A464, 227A465, 227A466, 227A467, 227A468, 227A469, 227A470, 227A471, 227A472, 227A473, 227A474, 227A475, 227A476, 227A477, 227A478, 227A479, 227A480, 227A481, 227A482, 227A483, 227A484, 227A485, 227A486, 227A487, 227A488, 227A489, 227A490, 227A491, 227A492, 227A493, 227A494, 227A495, 227A496, 227A497, 227A498, 227A499, 227A500, 227A501, 227A502, 227A503, 227A504, 227A505, 227A506, 227A507, 227A508, 227A509, 227A510, 227A511, 227A512, 227A513, 227A514, 227A515, 227A516, 227A517, 227A518, 227A519, 227A520, 227A521, 227A522, 227A523, 227A524, 227A525, 227A526, 227A527, 227A528, 227A529, 227A530, 227A531, 227A532, 227A533, 227A534, 227A535, 227A536, 227A537, 227A538, 227A539, 227A540, 227A541, 227A542, 227A543, 227A544, 227A545, 227A546, 227A547, 227A548, 227A549, 227A550, 227A551, 227A552, 227A553, 227A554, 227A555, 227A556, 227A557, 227A558, 227A559, 227A560, 227A561, 227A562, 227A563, 227A564, 227A565, 227A566, 227A567, 227A568, 227A569, 227A570, 227A571, 227A572, 227A573, 227A574, 227A575, 227A576, 227A577, 227A578, 227A579, 227A580, 227A581, 227A582, 227A583, 227A584, 227A585, 227A586, 227A587, 227A588, 227A589, 227A590, 227A591, 227A592, 227A593, 227A594, 227A595, 227A596, 227A597, 227A598, 227A599, 227A600, 227A601, 227A602, 227A603, 227A604, 227A605, 227A606, 227A607, 227A608, 227A609, 227A610, 227A611, 227A612, 227A613, 227A614, 227A615, 227A616, 227A617, 227A618, 227A619, 227A620, 227A621, 227A622, 227A623, 227A624, 227A625, 227A626, 227A627, 227A628, 227A629, 227A630, 227A631, 227A632, 227A633, 227A634, 227A635, 227A636, 227A637, 227A638, 227A639, 227A640, 227A641, 227A642, 227A643, 227A644, 227A645, 227A646, 227A647, 227A648, 227A649, 227A650, 227A651, 227A652, 227A653, 227A654, 227A655, 227A656, 227A657, 227A658, 227A659, 227A660, 227A661, 227A662, 227A663, 227A664, 227A665, 227A666, 227A667, 227A668, 227A669, 227A670, 227A671, 227A672, 227A673, 227A674, 227A675, 227A676, 227A677, 227A678, 227A679, 227A680, 227A681, 227A682, 227A683, 227A684, 227A685, 227A686, 227A687, 227A688, 227A689, 227A690, 227A691, 227A692, 227A693, 227A694, 227A695, 227A696, 227A697, 227A698, 227A699, 227A700, 227A701, 227A702, 227A703, 227A704, 227A705, 227A706, 227A707, 227A708, 227A709, 227A710, 227A711, 227A712, 227A713, 227A714, 227A715, 227A716, 227A717, 227A718, 227A719, 227A720, 227A721, 227A722, 227A723, 227A724, 227A725, 227A726, 227A727, 227A728, 227A729, 227A730, 227A731, 227A732, 227A733, 227A734, 227A735, 227A736, 227A737, 227A738, 227A739, 227A740, 227A741, 227A742, 227A743, 227A744, 227A745, 227A746, 227A747, 227A748, 227A749, 227A750, 227A751, 227A752, 227A753, 227A754, 227A755, 227A756, 227A757, 227A758, 227A759, 227A760, 227A761, 227A762, 227A763, 227A764, 227A765, 227A766, 227A767, 227A768, 227A769, 227A770, 227A771, 227A772, 227A773, 227A774, 227A775, 227A776, 227A777, 227A778, 227A779, 227A780, 227A781, 227A782, 227A783, 227A784, 227A785, 227A786, 227A787, 227A788, 227A789, 227A790, 227A791, 227A792, 227A793, 227A794, 227A795, 227A796, 227A797, 227A798, 227A799, 227A800, 227A801, 227A802, 227A803, 227A804, 227A805, 227A806, 227A807, 227A808, 227A809, 227A810, 227A811, 227A812, 227A813, 227A814, 227A815, 227A816, 227A817, 227A818, 227A819, 227A820, 227A821, 227A822, 227A823, 227A824, 227A825, 227A826, 227A827, 227A828, 227A829, 227A830, 227A831, 227A832, 227A833, 227A834, 227A835, 227A836, 227A837, 227A838, 227A839, 227A840, 227A841, 227A842, 227A843, 227A844, 227A845, 227A846, 227A847, 227A848, 227A849, 227A850, 227A851, 227A852, 227A853, 227A854, 227A855, 227A856, 227A857, 227A858, 227A859, 227A860, 227A861, 227A862, 227A863, 227A864, 227A865, 227A866, 227A867, 227A868, 227A869, 227A870, 227A871, 227A872, 227A873, 227A874, 227A875, 227A876, 227A877, 227A878, 227A879, 227A880, 227A881, 227A882, 227A883, 227A884, 227A885, 227A886, 227A887, 227A888, 227A889, 227A890, 227A891, 227A892, 227A893, 227A894, 227A895, 227A896, 227A897, 227A898, 227A899, 227A900, 227A901, 227A902, 227A903, 227A904, 227A905, 227A906, 227A907, 227A908, 227A909, 227A910, 227A911, 227A912, 227A913, 227A914, 227A915, 227A916, 227A917, 227A918, 227A919, 227A920, 227A921, 227A922, 227A923, 227A924, 227A925, 227A926, 227A927, 227A928, 227A929, 227A930, 227A931, 227A932, 227A933, 227A934, 227A935, 227A936, 227A937, 227A938, 227A939, 227A940, 227A941, 227A942, 227A943, 227A944, 227A945, 227A946, 227A947, 227A948, 227A949, 227A950, 227A951, 227A952, 227A953, 227A954, 227A955, 227A956, 227A957, 227A958, 227A959, 227A960, 227A961, 227A962, 227A963, 227A964, 227A965, 227A966, 227A967, 227A968, 227A969, 227A970, 227A971, 227A972, 227A973, 227A974, 227A975, 227A976, 227A977, 227A978, 227A979, 227A980, 227A981, 227A982, 227A983, 227A984, 227A985, 227A986, 227A987, 227A988, 227A989, 227A990, 227A991, 227A992, 227A993, 227A994, 227A995, 227A996, 227A997, 227A998, 227A999, 227A1000

Disoriented Diagram A

Disoriented Diagram B

Disoriented Diagram C

Bluff Street

Smith Street

Farmer Street

Moody Street

SEC. 12

SEC. 16

SEC. 18

9a-2r-31-B

9a-1r-02p

Proposed

Proposed

Proposed

Proposed

Proposed

Proposed

Proposed

Proposed

Proposed

Proposed

Proposed

Proposed

Proposed

Proposed

Proposed

Proposed

Proposed

Proposed

Proposed

Proposed

Proposed

Proposed

Proposed

Proposed

Proposed

Proposed

Proposed

Proposed

Proposed

Proposed

Proposed

Proposed

Proposed

Proposed

Proposed

Proposed

Proposed

Proposed

Proposed

Proposed

Proposed

Proposed

Proposed

Proposed

Proposed

Proposed

Proposed

Proposed

Proposed

Proposed

Proposed

Proposed

Proposed

Proposed

Proposed

Proposed

Proposed

Proposed

Proposed

Proposed

Proposed

Proposed

Proposed

Proposed

Proposed

Proposed

Proposed

Proposed

Proposed

Proposed

Proposed

Proposed

Proposed

Proposed

Proposed

Proposed

Proposed

Proposed

Proposed

Proposed

Proposed

Proposed

Proposed

Proposed

Proposed

Proposed

Proposed

Proposed

Proposed

Proposed

Proposed

Proposed

Proposed

Proposed

Proposed

Proposed

Proposed

Proposed

Proposed

Proposed

Proposed

Proposed

Proposed

Proposed

Proposed

Proposed

Proposed

Proposed

Proposed

Proposed

Proposed

Proposed

Proposed

Proposed

Proposed

Proposed



**COMPUTER FREEHOLD REGISTER
UNDER LAND TRANSFER ACT 1952**



Search Copy


R. W. Muir
Registrar-General
of Land

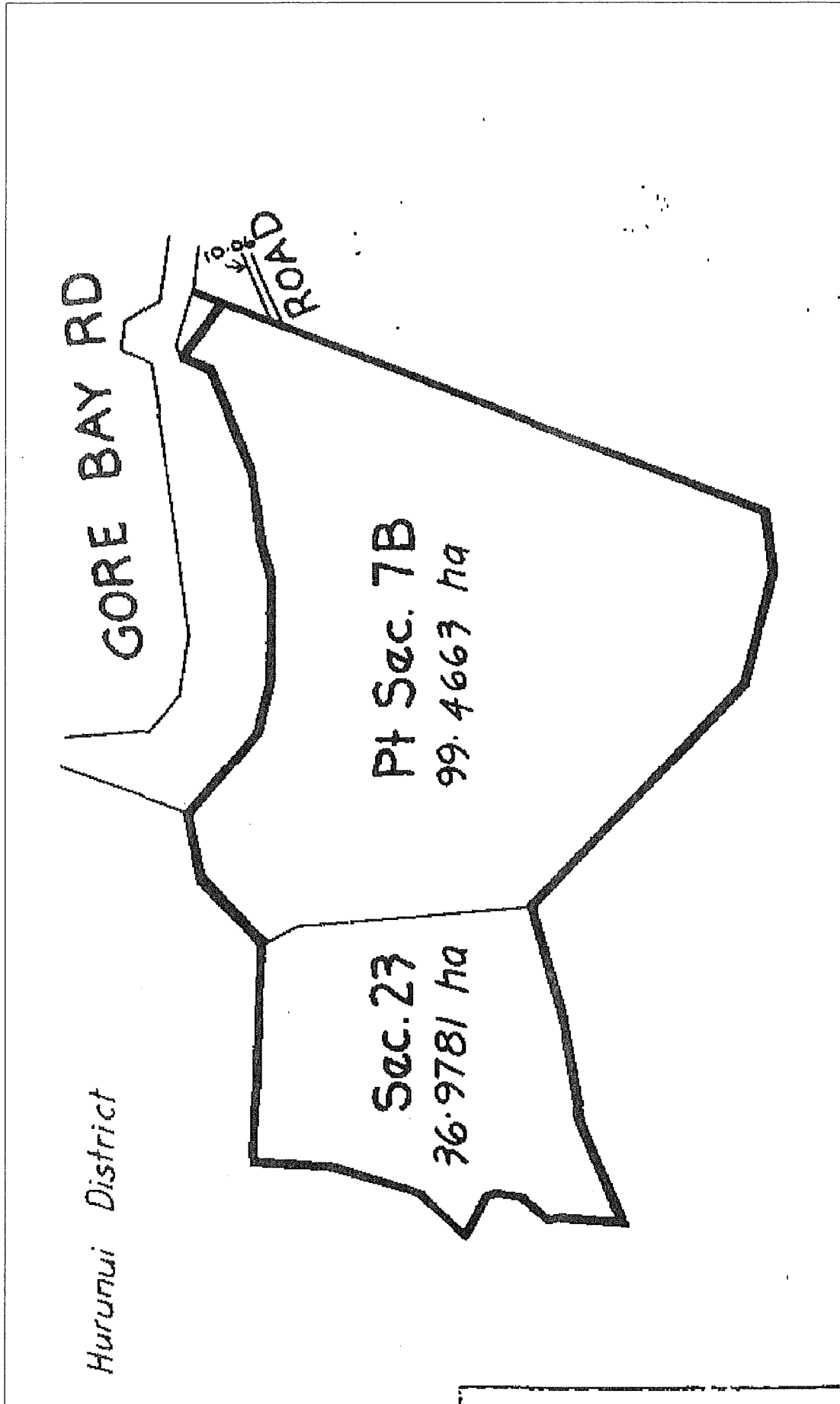
Identifier CB35A/746
Land Registration District Canterbury
Date Issued 04 November 1991

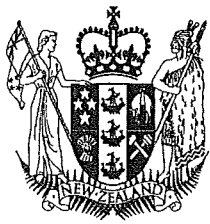
Prior References
CB26A/801

Estate Fee Simple
Area 136.4444 hectares more or less
Legal Description Section 23 and Part Section 7B Block IX
Cheviot Survey District

Proprietors
Buxton Gore Bay Limited

Interests
Subject to Section 8 Mining Act 1971
Subject to Section 5 Coal Mines Act 1979





**COMPUTER FREEHOLD REGISTER
UNDER LAND TRANSFER ACT 1952**



Search Copy


R. W. Muir
Registrar-General
of Land

Identifier CB507/10
Land Registration District Canterbury
Date Issued 02 September 1947

Prior References
CB309/54

Estate	Fee Simple
Area	2.2501 hectares more or less
Legal Description	Part Section 20 Block IX Cheviot Survey District

Proprietors
Buxton Gore Bay Limited

Interests
2221 Order in Council imposing Building Line Restriction - 26.5.1947 at 11.01 am

IX Cheviot S. D.

