

Short Term Maintenance Review

Area	Comments	Recommendations	Action Proposed
	Mowing - Including lawns and woodlot areas, as well as trimming of grass edges	Generally looks pretty good, but more care could be taken for trimming of lawn edge.	Ensure lawn is trimmed neatly along edges, especially close to walkways etc.
	Spraying - Including road edges and building perimeters, garden beds, rose beds, fruit trees, and base of trees / powerpoles	Weeds were noted on the pathways, areas of hardstand and around the buildings.	Ensure a regular spraying occurs at certain times throughout the year.
	Hedge trimming, tidying of shingle areas, clearing of leaves and storm debris through autumn / winter	Generally looks well looked after, hedge was trimmed (although one section too high), shingle tidy. Some debris/fallen branches along waterway walk.	Hedges should be kept to same height (1.5m) as previously suggested. Regular check for fallen branches/debris weekly.
	Pruning of roses, removal of suckers on trees, rubbish removal, trimming of climbers, shrub bed maintenance	Suckers and the presence of weed saplings (rowan, holly and elm) were noted. A large number of trees show signs of wind damage and dieback.	As a general practise all suitable vegetation removed (except rose clippings) should be mulched and spread on garden beds.
	Fertilising of all shrub beds throughout the reserve	Unknown	
		A number of stumps were noted in lawn areas (especially around main Jacks Pass Entrance).	Remove stumps with stump muncher and reinstate lawn areas for ease of maintenance.
		The stream was littered with debris in several places and blocked with fallen willow tree branches.	Clear stream of fallen branches, remove willow trees if unhealthy or unruly, remove all debris associated with this.
Area 1 - Jacks Pass Entrance			
	General		
1	Re-instate the existing path along the stream. Path shall have a lime chip surface, with timber edge.	Pathway edge in places is damaged and is now a health and safety issue.	Repair existing path and timber edge where required. Surface with compacted lime chip.
A	Dangerous Bridge (possibly outside of reserve boundary)	Delapidated bridge exists along the Hospital Stream.	Replace or remove dilapidated bridge.
Arborist			
2	Removal of 4 potentially dangerous willows, in poor condition	Noted that willow trees are still present, and fallen branches are blocking parts of the waterway. There are also blockages within the	Arborist work to be completed. Ongoing maintenance and removal of dead and dangerous limbs to be undertaken.
3	Tidying of any fallen and potentially dangerous logs and debris, notably near footpath.	Saplings (rowan, holly and elm) and debris are accumulating along stream. A large number of	
4	Felling of dead spars	trees show signs of wind damage and dieback.	
5	Removal of dead wood within mature trees along stream, through formative pruning		
12	Removal of dead Beech tree in north west corner	See above (formerly in Area 2)	Arborist work to be completed. Ongoing maintenance and removal of dead and dangerous limbs to be undertaken.
13	Removal of Oak tree with damaged stems, in north west corner	See above (formerly in Area 2)	
14	Removal of dead wood within mature trees through formative pruning, notably in lower crowns of conifers	See above (formerly in Area 2)	
6	Pruning of vegetation in proximity to walkway	New planting is too close to walkway in some places.	Relocate plants and especially flax at least 2.5 m from pathway edge to avoid maintenance issue.
Area 2 - Jacks Pass Entrance			
	General		
7	Lowering of existing Laurel hedge to height of 1500mm	One section of Laurel hedge along the Jacks Pass boundary is higher than the other.	Maintain hedge to lower height to allow views into and out of the site.
8	Fill gap in hedge	Post and rail fence in place of hedge.	Keep post and rail fence, paint white to tie in with proposed heritage fencing.
9	Clearance of unwanted vegetation in rose beds to front of Chisholm Ward, and pruning of existing roses.	Rose beds are not thriving and lack planted bulk and definition. Roses are in poor health. Garden beds are generally out of scale with the setting and built backdrop.	Enlarge and edge all rose gardens with buxus to give year round form and bulk as an entrance feature.
B	Camellias Adjacent to Waterway	A group of camellias unnecessarily obscures views to the waterway.	Remove group of camellias at time of flowering to entrance shrub bed.
10	Pruning and tidying of vegetation within frontage gardens	Large shrub bed lacks visual coherence and amenity due to overcrowding, poor choice of shrubs and removal of lower ground cover edging.	Remove weeds, variegated conifer yew tree, purple leaf plum, Garrya elliptica, and plagianthus. Prune Euonymus europaeus, retain Robinias. Limb and tidy other plants. Add transplanted camellias and edge bed with conifer ground cover, refer to suggestions on planting palette.
Arborist			
11	Removal of Willow tree near grove of Oaks	Achieved - huge stump remains	as above

Table 1. Two Year Landscape Maintenance Review 2017

14	Removal of dead wood within mature trees through formative pruning, notably in lower crowns of conifers	Ongoing maintenance required	Arborist work to be completed. Ongoing maintenance and removal of dead and dangerous limbs to be undertaken.
15	Removal of dead fronds from 4x protected Fan Palms	Ongoing maintenance required	
Area 3 - Thermal Pools			
	General		
16	Pruning of rose garden next to Nurses' Hostel	The rose garden is overgrown and contains mostly large semi double magenta floribunda shrub roses, rather than the 'Peace' Rose (a hybrid tea rose with a light yellow flower occasionally flushed with pink) specified in the documentation.	Formalise the rose bed layout, edge with buxus and retain river boulder garden edge. Remove magenta roses and add Peace Rose shrubs.
C	Built in Planters in Nurses Hostel	Built in planters around the Nurses Hostel are either empty or overgrown with weeds including blackberry.	Remove weeds, replant with buxus or hardy species that requires minimal maintenance.
Arborist			
17	Removal of overgrown shrubs from garden beds, such as Bamboo.	The herbaceous / mixed border south of Chisholm Ward is very dry, overgrown and in places bare of plants. It lacks visual cohesion and amenity.	Retain Camellias, Rhododendrons, Choisya ternata (Mexican orange blossom), Polygonatum biflorum (solomons seal), Sisyrinchium striatum, Peony, Hostas etc. Remove all other weeds. Retain stone edging and plant conifer groundcover (Juniperus taxifolia or Juniperus sabina) around garden bed edge. Install a watering system.
18	Removal of dead-wood, damaged limbs and dead central stems within mature trees through formative pruning, notably in the Beech tree and numerous Silver Birch trees.	Ongoing maintenance required - especially to Horse Chestnut Avenue.	Remove carpet of tree seedlings underneath the avenue trees.
19	Removal of deadwood within apple trees.	The Apple Orchard is not well maintained and a couple of trees are missing and / or dead.	Replace missing trees and dead tree with appropriate apple variety.
20	Replacement of 1 dead Apple tree within orchard, to be replaced with similar species		
Area 4 - Thermal Pools			
	General		
Arborist			
21	Removal of dead wood and damaged limbs within mature trees through formative pruning, notably in the large Pin Oaks.	Ongoing maintenance required.	Remove adventitious basal growth on Lime trees and prune tree limbs to shape as necessary.
D	Blacksmiths Cottage	Dead area at rear of Blacksmiths cottage needs attention. This will depend on the decision regarding the Boiler area.	Remove sapling and weed vegetation at rear of Blacksmiths cottage. Maintain as lawn in the interim.
E	Views to Thermal Pools	Views to Thermal Pool area are distracting.	Add shrub planting along Thermal Pools boundary, refer to the planting palette
Area 5 - Thermal Pools			
	General		
22	Selective removal and tidying of overcrowded shrubs within shrub beds on thermal pool complex boundary, and surrounding Soldiers' Block	The northern boundary with the Thermal Pools is relatively intact and provides important screening to the pool area. There are however gaps in the screening and views to the mountain backdrop. The planting consists mainly of rhododendrons, viburnum, camellias, fan palms etc. A number of native trees and shrubs are included.	Remove native plants and replace with appropriate exotic species. Suitable native species include Astelia, Hebe Inspiration and mountain flax. Avoid divaricating species and those that are not consistent with the existing shrub planting to ensure a coherent planting. Plant to screen Thermal Pools and maintain views to mountain backdrop but retain access to Thermal Pools.
F	Internal courtyard	The internal courtyard is completely overgrown.	Maintenance of this area is required. If necessary remove planting except for specimen tree and grass area.
G	Soldiers Block Rose Garden	Rose area to rear of Soldiers Block is ok.	Add Peace Rose and surround garden with Buxus. Use river stone edging for consistency throughout the site.
Arborist			
23	Removal of Oak tree on Amuri Avenue Boundary	Unsure if this has occurred.	Maintain and retain all existing trees in Amuri Entrance.
24	Lift low or over-crowded limbs and remove dead wood from conifers on Amuri Avenue boundary	The views into the site from Amuri Avenue are obscured by some random shrubs that interrupt the treed parkland theme.	Shrubs (viburnum, coprosma etc) should be removed to improve outlook and afford a greater prominence to the Cedar of Lebanon. Retain Arbutus unedo and Cedar and prune to shape.



Figure 1. Two Year Landscape Maintenance Plan, 2010 (Peter Rough Landscape Architects Limited)

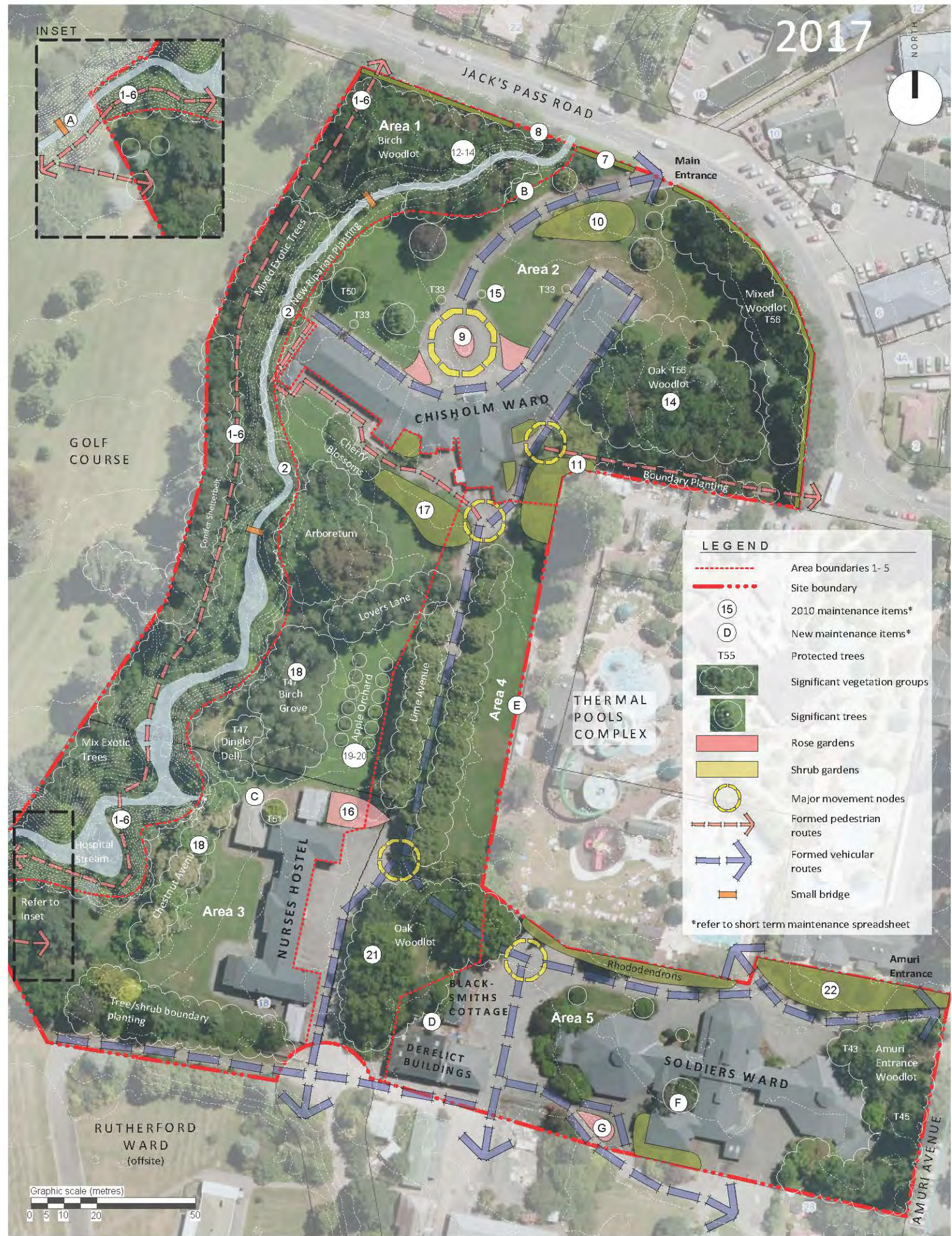


Figure 2. Two Year Landscape Maintenance Review Plan, 2017 (R+M)

Long Term Development Review

Item	Issue	Current Status	Actions Proposed
	As per short term maintenance.		
	Establishment of dripline irrigation into all existing shrub beds.	Areas within the site are not thriving as a consequence of insufficient irrigation.	Install programmable irrigation system - this is in part dependant on resolving the circulation system.
	General		
1	Planting of mixed native vegetation on stream banks, immediately following removal of saplings and undergrowth. *	Native planting is closely spaced and consists of species (hebes, kowhai, lancewoods, red beech, plagianthus, flax) that will form a dense thicket resulting in the removal of views and CPTED issues (Crime Prevention through Environmental Design).	Thin and transplant many of the larger species etc and generally replace with low growing species such as Chionochloa flavicans, Anemanthe lessoniana at recommended spacings to retain views and address CPTED matters. Refer Plant Palette for suitable species and spacings.
2	Ongoing weed control and maintenance of stream banks, following planting of native vegetation. *	Weeds present, stream banks need attention.	Undertake maintenance.
3	Access points to walkway alongside stream. *	In several places desire lines across the stream were evident.	Consider formalising desire lines as pathways and construct bridges where necessary.
4	Strengthening of footpath connection with Jack's Pass Road, using bollards, paving and signage.	Jacks Pass Road entrances need a higher profile and / or connection to township walkways nearby.	Walkways should be identified with directional signage, white painted wooden bollards and picket gates to be consistent. Refer Materials Palette.
	Arborist		
5	Removal of saplings, spars and undergrowth along the streams banks. *	Waterway vegetation is a mix of native and exotic. Minimise exotic intrusion to enhance native riparian experience along waterway / Hospital Stream.	Remove exotics (except pine shelter and selected willows) on west side of stream - especially silver birch, prunus species (wild cherries). Transplant fan palm x 1 to Chisholm Block side of stream, if possible. Replace exotic species with native species suggested within planting palette.
6	Lifting and tidying of large conifers on western bank of stream. *	Ongoing maintenance required.	
7	Selective removal / pruning of vegetation on boundary to permit views toward mountains across golf course. *	Partly achieved / ongoing maintenance required.	
8	Long-term formative pruning of mature trees to remove deadwood, every 4-5 years. *	Ongoing maintenance required.	
15	Removal of inferior Oak and Ash trees in north west corner, to reduce overcrowding. * (formerly Area 2)	Refer to short term maintenance.	
	General		
9	Replacement of Roses in Rose bed.	Refer to Item 9. short term maintenance.	
10	Addition of suitable shrubs to garden bed parallel with existing footpath. *	Refer to Item 10. short term maintenance.	
11	Enhancement of the Jack's Pass Road entrance to improve pedestrian access into the site, including restoration of existing entranceway walls and the introduction of bollards and paving. Maintenance of existing secondary footpath entrance through Laurel hedge.	The Jacks Road corner entrance lacks presence and direction due to its relationship with the service entrance to the Thermal Pools and termination at the east facade of the Chisholm building. The amenity along the pathway is low due to the proximity to the service entrance to the Thermal Pool facility, corrugated iron boundary fence and poor quality planting. The garden bed along the Thermal Pool boundary is weak and contains a high proportion of weed tree species. In general this boundary garden bed lacks structure and visual coherency.	Improve signage. Further planting is recommended below. Remove the purple leaf plum tree and replace with suitable specimen tree. Add rhododendrons, camellias and azaleas along the boundary to screen the corrugated iron fence and Thermal Pool service area. Retain weeping elm.
12	Introduction of 'wildflower' seed mix under Oak grove	Unknown - seasonal.	
13	Introduction of new footpath with limechip surface and timber edge, to the inside of the existing Laurel hedge.	Not achieved but question whether this is necessary.	Suggest informal mown path instead, see item 16.
H	Ornamental Trees Adjacent to Oak Woodlot	Two flowering cherry trees and a magnolia are located on the lawn area west of the Jacks Pass entrance. These trees are out of scale with the setting and the magnolia has been damaged.	Relocate these trees to the front shrub bed.

Table 2. Long Term Landscape Development Review 2017

I	Saplings Adjacent to Chisholm	A number of weed saplings have grown up around the building adding to the general decay and rundown appearance of the buildings and site.	Remove all weed saplings around the building.
J	Large Tree/Shrub Garden Adjacent to Chisholm & Thermal Pools	Large boundary shrubbery at east boundary with Thermal Pools facility contains two established <i>Larix decidua</i> / <i>Taxodium distichum</i> - deciduous cedars, rhododendrons, hebes, escallonia, <i>Acer palmatum</i> and a large number of elm saplings, blackberry and large stump.	Remove all saplings and weeds, grind to remove stump and prune remaining shrubs to shape. Limb up trees to allow views through to Lime Tree avenue. This will improve the perception of safety and permeability through the site which is constrained at the southern corner of the Chisholm Ward.
	Arborist		
14	Long-term formative pruning of mature trees to remove deadwood, every 4-5 years. *	Refer to short term maintenance.	
	General		
16	Establishment of informal footpaths amongst plantings of existing trees (mown grass). *	The Hospital Stream walkway ascends the bank appearing at a group of three grey cedars (<i>Cedrus atlantica glauca</i>) west of the Nurses Hostel. The track stops abruptly at the top of the bank with no clear indication of pedestrian circulation options through the site.	Provide white painted timber bollards and a directional sign at the edge of the bank / walkway indicating site circulation options including direction to the Nurses Hostel, Lovers Lane and Dingle Dell etc. Continue the track as a gravel pathway into the Nurses Hostel grounds west of and alongside the Chestnut Avenue.
17	Replacement of Roses in garden next to Nurses' Hostel. *	The rose garden is overgrown and lacks structure. The Peace Rose shrubs lack presence and are not thriving. A magenta <i>floribunda</i> rose dominates the garden bed.	Improve views and circulation by reducing rose garden and formalising layout. Edge garden bed with buxus. Ensure river stone edging is placed to outline garden.
	Arborist		
18	On-going monitoring of apple trees to assess performance. *	Refer to short term maintenance.	Requires regular ongoing monitoring and maintenance.
19	Long-term formative pruning of mature trees to remove deadwood, every 4-5 years. *	Refer to short term maintenance.	Requires regular ongoing monitoring and maintenance.
20	Removal of <i>Macrocarpa</i> tree. *	Not obvious if this has been completed.	Grind all stumps and reinstate as lawn.
21	Removal of Chestnut tree. *	Not obvious if this has been completed.	Grind all stumps and reinstate as lawn.
22	Long-term successional replacement of apple trees as deemed necessary.	Noted that except for a few in general the apple trees are not thriving.	
K	Magnolia Garden	A garden containing a large deciduous <i>Magnolia</i> on the south side of Chisholm Ward is becoming overgrown with weed species. This garden and established <i>Magnolia</i> tree convey a high level of amenity that is becoming obliterated due to lack of maintenance.	Remove saplings and blackberry. Retain and prune hydrangeas and retain <i>Rhododendrons</i> .
L	Chestnut Avenue	The chestnut avenue is well established. Trees require some maintenance and the avenue itself provides an opportunity to provide a connection between the waterway track and the Nurses Hostel grounds.	Remove the carpet of tree seedlings underneath the chestnuts, establish a gravel pathway to the Nurses Hostel Birch Grove 'Dingle Dell'. Potential site for feature sculpture or seat.
M	Arboretum	There is a cluster of specimen trees around the <i>Eucalyptus viminalis</i> (Manna gum) including a <i>Pinus strobus</i> (? long needles), a <i>Ginkgo biloba</i> , <i>Acer palmatum</i> , <i>Ulmus Camperdownii</i> , <i>Acer Saccharum</i> sugar maple, oaks and <i>Trachycarpus fortunei</i> . Vegetation, including bamboo, has established around the base of some trees reducing the appearance of an arboretum parkland. Noted an area of concrete slabs between large oaks although it is unclear what this relates to?	Remove vegetation at the base of the trees, including those on the edge of the waterway to emphasise this cluster of specimen trees.

Long Term Development Review

11 specific works for area 4: Avenue between Chisholm Ward and Klausner Road		Comments	Actions Proposed
	General		
23	Long-term additional vegetation introduced to screen south side of Chisholm Ward.	The Lime Tree Avenue terminates at the rear facade of the Chisholm building. The view is ugly and requires mitigation through planting.	Remove asphalt area and construct shrub garden to screen rear facade of Chisholm building, refer to Long Term Development Plan.
	Arborist		
24	Long-term formative pruning of mature trees to remove deadwood, every 4-5 years. *	Refer to short term maintenance.	
10 specific works for area 5: Soldiers' Block		Comments	Actions Proposed
	General		
25	Enhancement of the Amuri Avenue entrance to improve pedestrian access into the site, including restoration of existing gate columns and the introduction of bollards and paving. *	The entrance gate appears to be restored. It is however closed although pedestrian access is still possible. The site boundary is not clearly identified conveying confusion about the extent of the site accessible to the public.	The white picket gate should be open to encourage public entry. The gate may need to be altered to function primarily as a pedestrian access.
26	Establishment of vegetation to screen southern boundary - 1.5 metre strip along full length of boundary.	The planting along the southern boundary has not been achieved. The southern extent of the site is not identified and leads to confusing options including access to private property.	Establish site boundary and planting - refer to Long Term Development Plan.
27	Additional planting within shrub beds on pools boundary / surrounding Soldiers' Block.	Refer to short term maintenance.	
	Arborist		
28	Removal of smaller conifers in proximity to Cedar of Lebanon. *	Achieved - although some shrubs remain and interfere with the treed parkland concept.	Remove shrubs within the grassed frontage between Amuri Avenue frontage and Soldier Block, leaving only trees and lawn areas
29	Long-term formative pruning of mature trees to remove deadwood, every 4-5 years. *	Refer to short term maintenance.	



Figure 3. Long Term Landscape Development Plan, 2010 (Peter Rough Landscape Architects Limited)

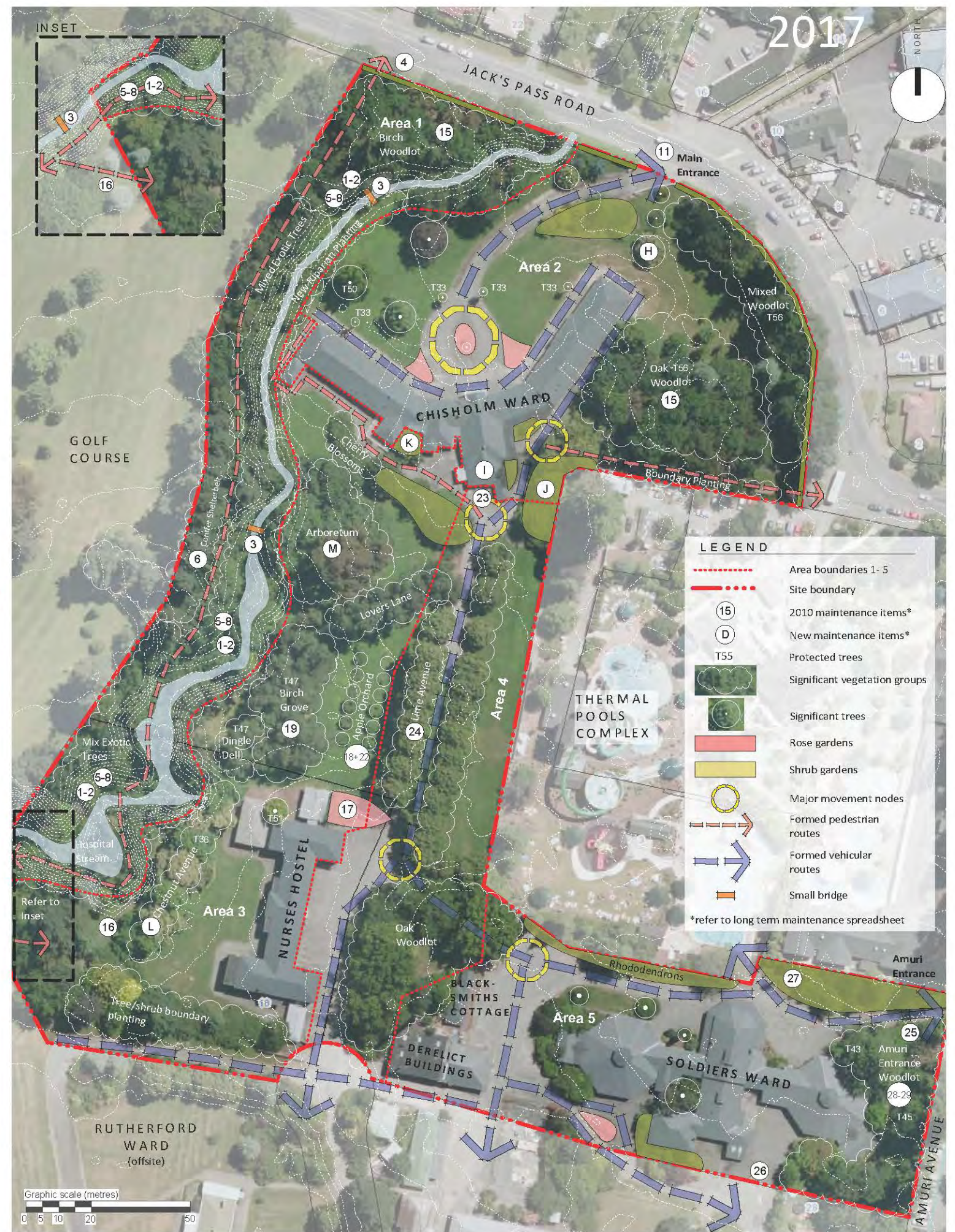


Figure 4. Long Term Landscape Development Plan Review, 2017 (R+M)

Soft Landscape Palette

DESIGN VISION – PLANTING

The Queen Mary Hospital Historic Reserve is described as a **'therapeutic oasis of wellbeing'** in the heart of the Hanmer Alpine Village. This is primarily conveyed by the landscape setting with its established planting that contributes to the site's unique purpose, character and amenity.

The planting vision is to continue this theme as a haven for healing, an experience of holistic health (spiritual, mental and physical) and wellbeing. The relationship of people and our connection to the land is a key component of this experience.

'E ai ki te Māori he hononga ita tō te tangata ki te whenua me te taiao'.

The planting is to convey the concept of nature as a healer and afford a restorative experience to all five senses.

Plant species are suggested to reflect the 1920 – 30's era in which the hospital buildings were established, acknowledging site limitations and maintenance requirements. Planting is proposed to recognise the existing intention of the site design and layout with its large open spaces, groupings of trees, tree species diversity, naturalistic layout, integrated building relationship to space and topography.

The following plant lists show species suitable to the planting design of the 1920-30's era but are by no means exhaustive.

FEATURE TREES

Suitable tree species include those existing, such as fan palms, a range of exotic deciduous and evergreen trees, native planting (1898) notably cabbage trees. Refer to the notable trees list for the reserve site.



Fagus sylvatica 'Purpurea'



Purple Beech



Liriodendron tulipifera



Tulip Tree



Cordyline australis



Cabbage Tree



Trachycarpus fortunei



Windmill Palm



Cupressus or Thuja spp.



Pencil Conifer



Wisteria sinensis

Wisteria



Prunus 'Amanogawa'



Upright Cherry

ROSE GARDENS



Rosa 'Madame A. Meilland'

Peace Rose



Buxus sempervirens

Buxus Hedge



Rosa spp.

David Austin rose varieties



Rosa spp.

Carpet Rose



Arctostaphylos uva ursi

Bearberry

MIDDLE OF BORDER



Daphne spp.

Daphne

CLIMBER SPECIES



Parthenocissus tricuspidata

Boston Ivy



Rosa 'Wedding Day'

Wedding Day Rambling Rose



Rhododendron spp.

Rhododendron + Azalea Cultivars



Viburnum spp.

Viburnum Cultivars (All sizes)

Soft Landscape Palette

MIDDLE OF BORDER CONTINUED...



Choisya ternata Mexican Orange Blossom



Veronica 'Inspiration' or 'Wiri Mist' Hebe Cultivars



Calluna spp. Heather



Pieris japonica 'Temple Bells' Japanese Andromeda



Cornus alba 'Siberica' Siberian Dogwood



Deutzia gracilis 'Nikko' Slender Deutzia



Camellia spp. Camellia

SHRUB GARDENS - BOUNDARY



Pittosporum eugenoides Lemonwood



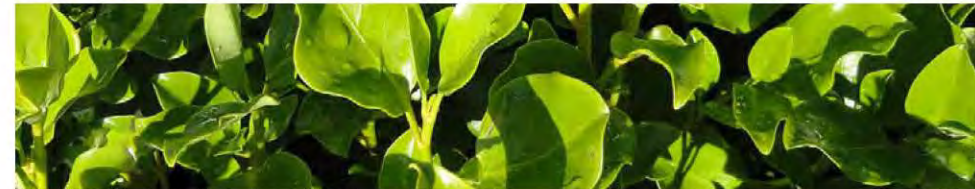
Hoheria + Plagianthus spp. Lace barks + Ribbonwoods



Rhododendron spp. (Large) Rhododendron



Viburnum spp. Larger Viburnum Cultivars



Griselinia littoralis 'Broadway Mint' Griselinia



Sophora molloyi 'Dragons Gold' Dwarf Kowhai



Veronica spp. Hebe species



Dodonea viscosa Ake Ake

PERENNIALS



Polygonatum biflorum Solomons Seal



Centaurea cyanus Cornflower



Diets grandiflora Wild Iris



Libertia grandiflora NZ Iris



Convallaria majalis Lily of the Valley



Gaura lindheimeri 'Whirling Butterflies' Lindheimer's Beeblossom



Hosta spp. Hosta



Lavandula spp. Lavender

Soft Landscape Palette

PERENNIALS CONTINUED...



Paeonia spp.

Peony Rose



Anemone spp.

Wind Flower



Bergenia spp.

Bergenia

ANNUALS



Viola tricolour spp.

Pansy



Narcissus spp.

Daffodil



Cosmos spp.

Cosmos



Petunioideae spp.

Petunia



Lobelias spp.

Lobelia

NATIVE FOREST SPECIES



Kunzea ericoides



Kanuka



Pittosporum eugenioides



Lemonwood



Dicksonia squarrosa



Wheki



Pseudopanax crassifolius



Lancewood



Lophozonia menziesii



Silver Beech



Prumnopitys taxifolia



Matai



Podocarpus totara



Totara



Microlaena avenacea



Bush Rice Grass

RIPARIAN SPECIES



Astelia fragrans

Bush Lily, Kakaha



Blechnum capense

Swamp Kiokio



Carex maorica

Makura



Chionochloa flavicans

Broad-leaved Snow Tussock



Juncus edgariae

Tussock Rushes, Wiwi



Carex virgata

Swamp Sedge



Microsorium pustulatum

Hounds Tongue Fern



Phormium tenax

Harakeke

Garden Illustrations



Illustration 1. Chisholm frontage and Heritage Rose Gardens



Illustration 2. Proposed garden bed to screen back entrance of Chisholm

Note: If maintenance is an issue it may be best to limit planting to a hedge and seat



Illustration 3. Nurses Hostel Heritage Rose Garden and proposed arbor

DESIGN VISION - FURNITURE

Queen Mary Hospital Historic Reserve has a long held strong heritage value recognised by Category 1 registered Historic listing of the buildings on site.

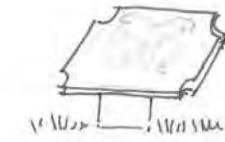
As this reserve holds such a prominent place in Hanmer's history it requires a strong identity reflecting the heritage style of the buildings and landscape (from the 1860's right through to the later style of the 1920's and 30's buildings that remain on site today). This can be achieved through a consistent approach to site furniture.

A heritage 'furniture palette' is proposed using original materials such as timber and wrought iron (preferably heritage or recycled), with a white paint finish. A series of different elements at various scales are suggested including large interpretation panels, information signs, bollards and way finders which will help to increase legibility and visual cohesion throughout the site.

Existing decorative heritage gates and fences are proposed to remain. It is recommended that Heritage photos, plans, and logos be incorporated into interpretation panels that are consistent with the heritage setting and located throughout the site to inform visitors on their journey back in time.



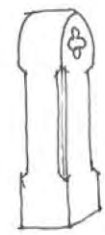
Primary sign for main entrances - site map, historic plans, photos + site history



Name plaques for Dingle Dell, Lovers Lane & the Orchard



Secondary sign for buildings of interest - historic photos + information



Bollards + wayfinders



Existing heritage style gates and fences to remain



Picket fence along Amuri Street frontage



Post and rail fence along southern boundary of site



Informal mown grass tracks with timber wayfinders



Wrought iron garden seats throughout site



Name plaques for notable trees

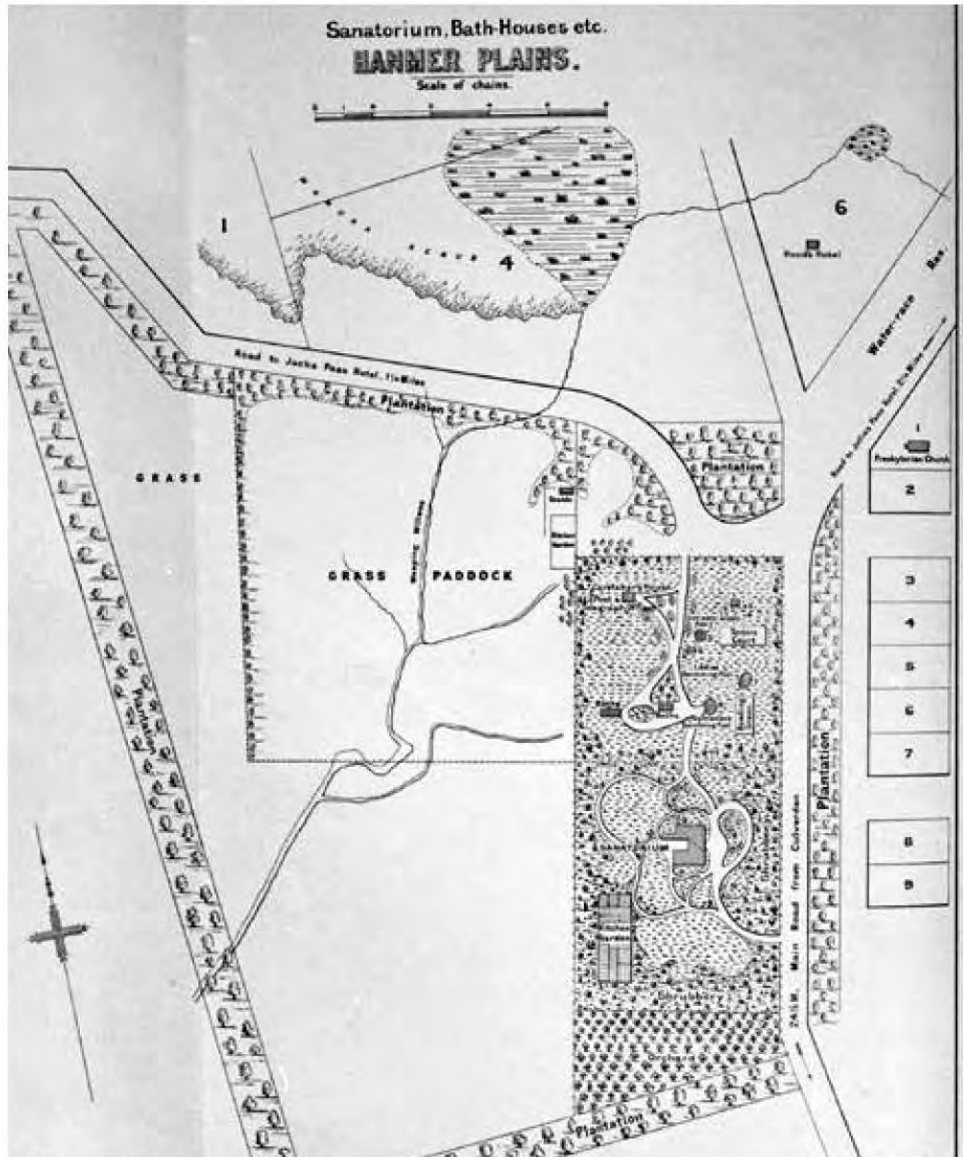


Small timber bridges, steps and compacted gritted paths across Hospital Stream



Utilise existing riverstone boulders for shrub and rose garden edges

Historic Content



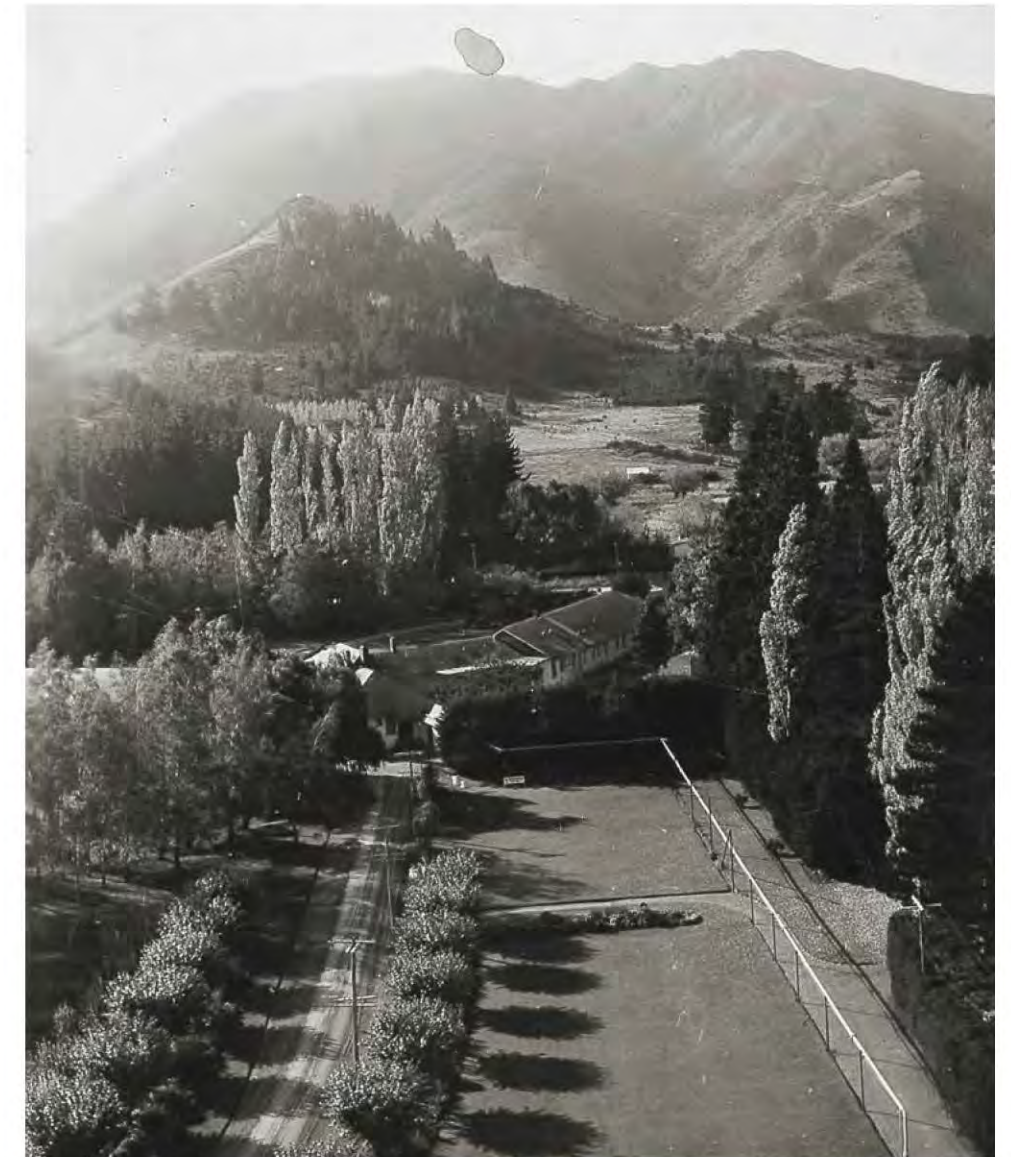
Old plan of Hanmer Sanatorium



Nurses Hostel - from west



Aerial of site - looking south



Aerial of site - looking north

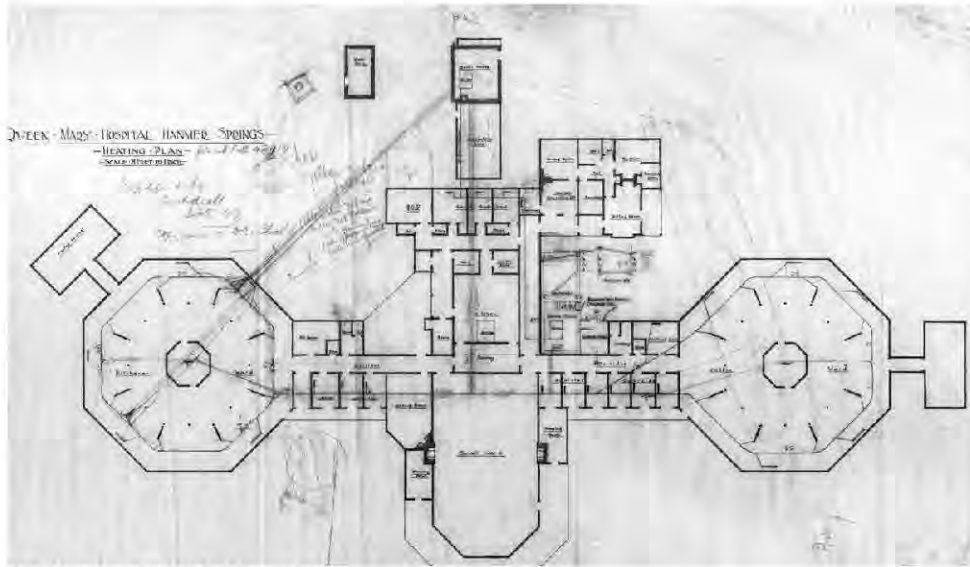


Illustration of old Hanmer Sanatorium



Chisholm Ward Entrance - looking west

Historic Content



Old heating plan of Soldiers Block



Old tea rooms and pond



Old tea rooms and garden (note style of seat and gardens)



Congregation outside tea rooms

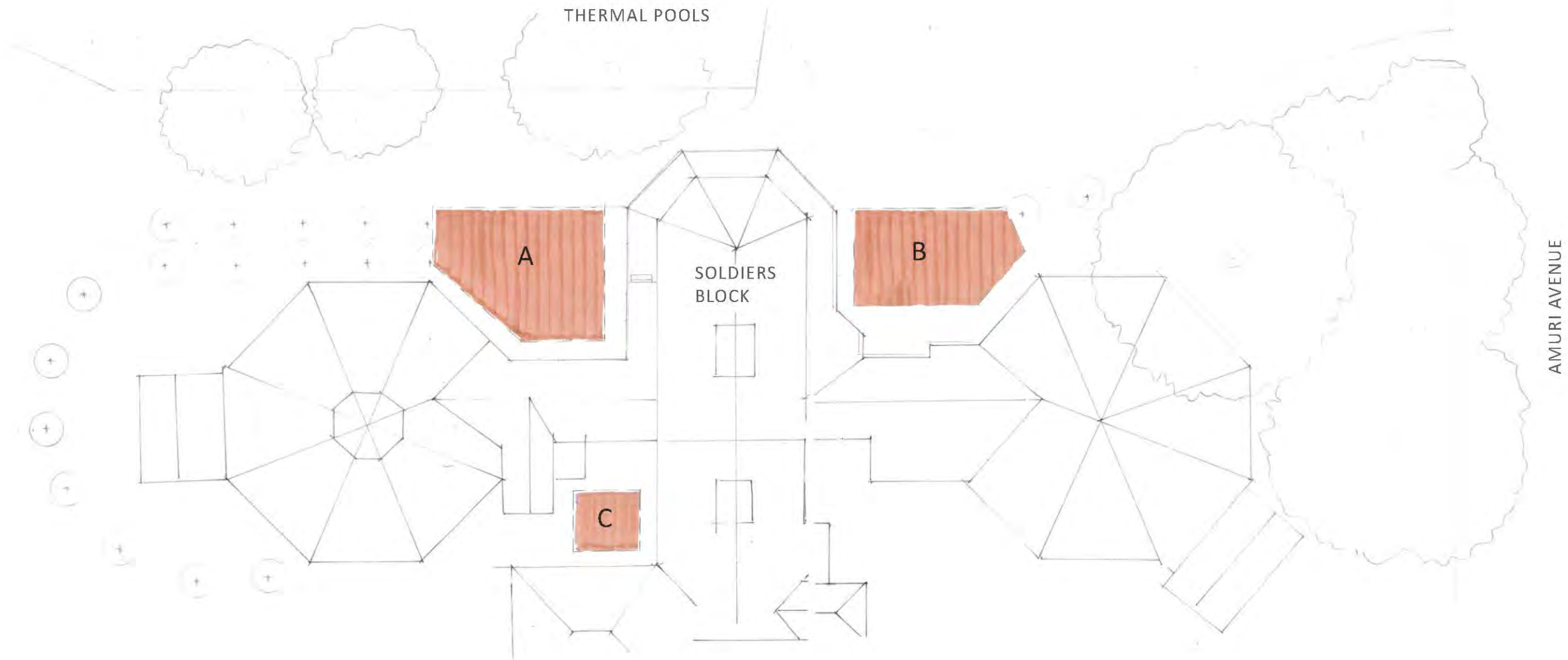


Soldiers Block



Historic Fountain (to be restored)

Fountain Location Options



OPTION A. Left hand side of Soldiers Block - peaceful, sheltered location, visually prominent with potential to create a dialogue with the built surroundings looking towards the Nurses Hostel

OPTION B. Right hand side of Soldiers Block - visible from main Amuri Road entrance, but lacks all day sun and shelter

OPTION C. Secluded square behind Soldiers Block - tranquil peaceful location, but hidden from view

Our Recommendation is Option A. The redesign will increase visual prominence and relate positively to the surrounding built scale. The orientation of the fountain and cherry blossom avenue will create view shafts to the Blacksmith Cottage area and Nurses Hostel.

Fountain Design Options

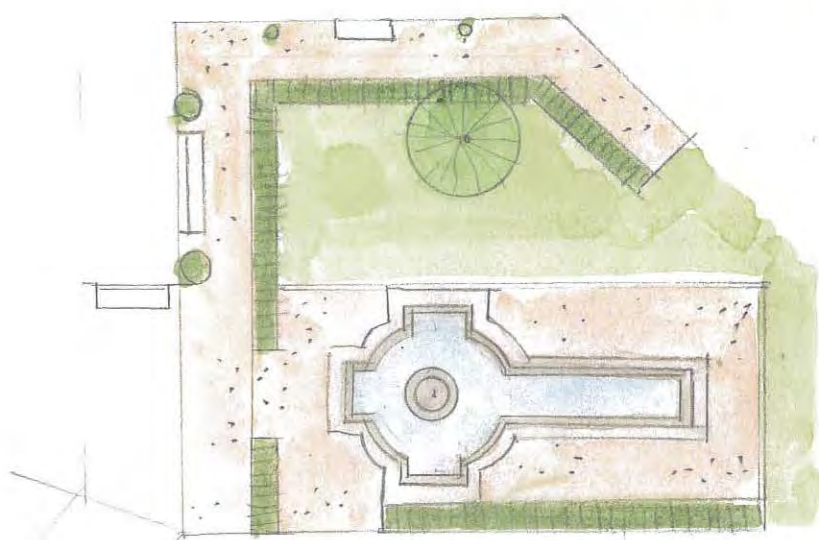
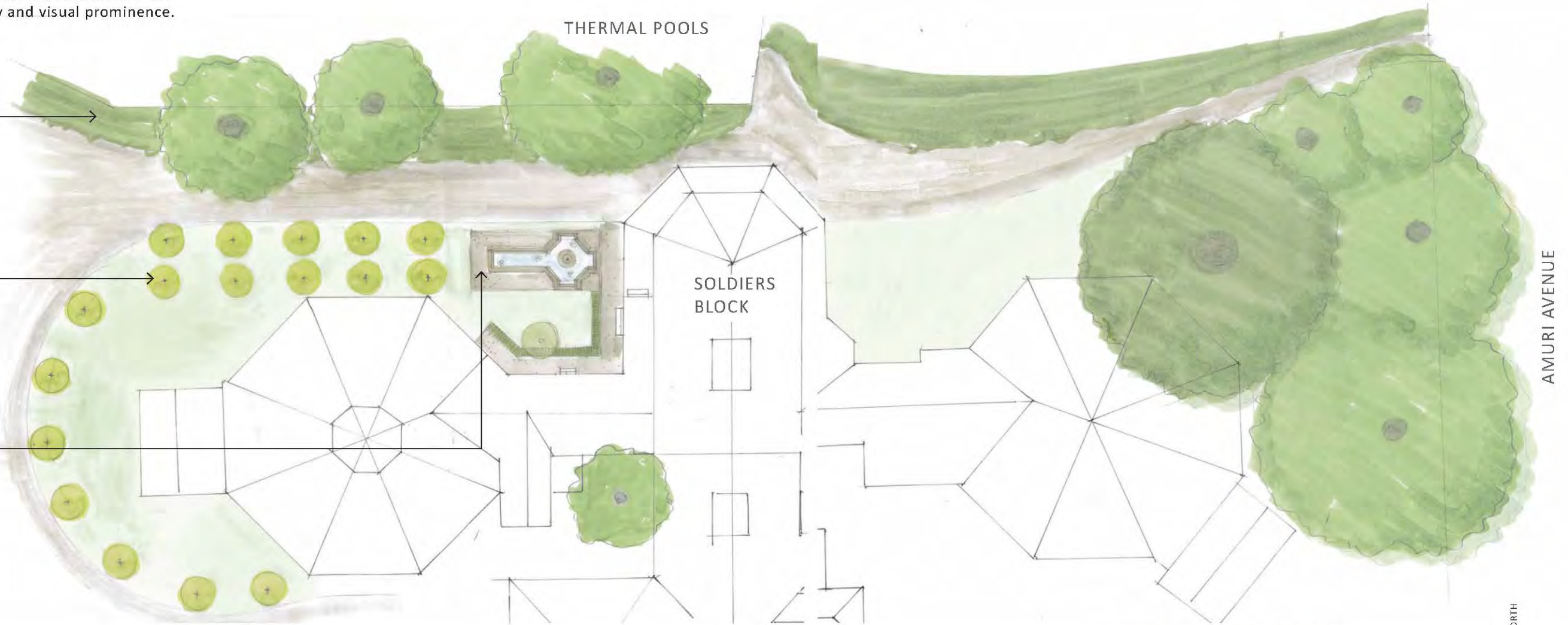
DESIGN VISION

The fountain options have been chosen to reference the historic design and to ensure that the fountain fits the built scale, increasing legibility and visual prominence.

Additional planting along boundary line to screen Thermal Pools activity and create peaceful atmosphere within the reserve. Planting should retain clear views to mountains.

Avenue of upright cherry trees emphasis's fountain with view focus and connection to Blacksmiths Cottage

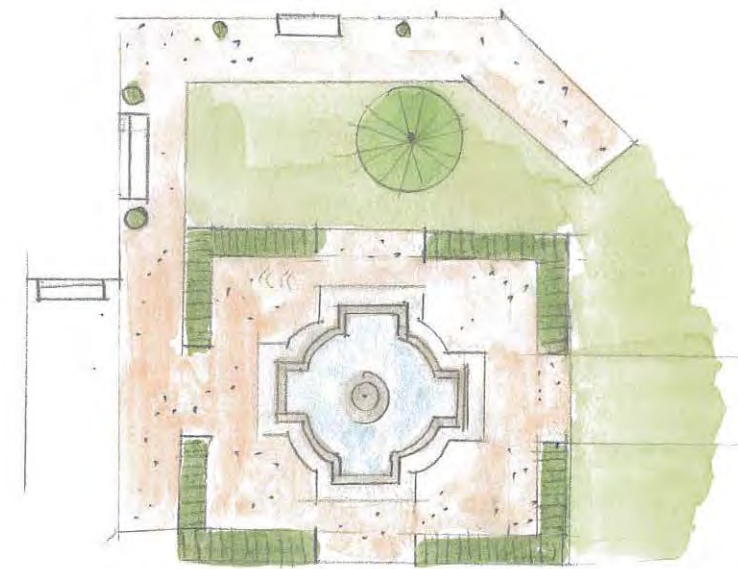
Fountain placement will formalise a shared space and create an internal feature consistent with the built scale.



OPTION 1. Circular water feature with extension (as original) with paving + compacted aggregate surround



OPTION 2. Octagonal water feature with extension - with hedge + compacted aggregate surround



OPTION 3. Circular OR hexagonal water feature (without extension) with paving + compacted aggregate surround

Fountain Illustration

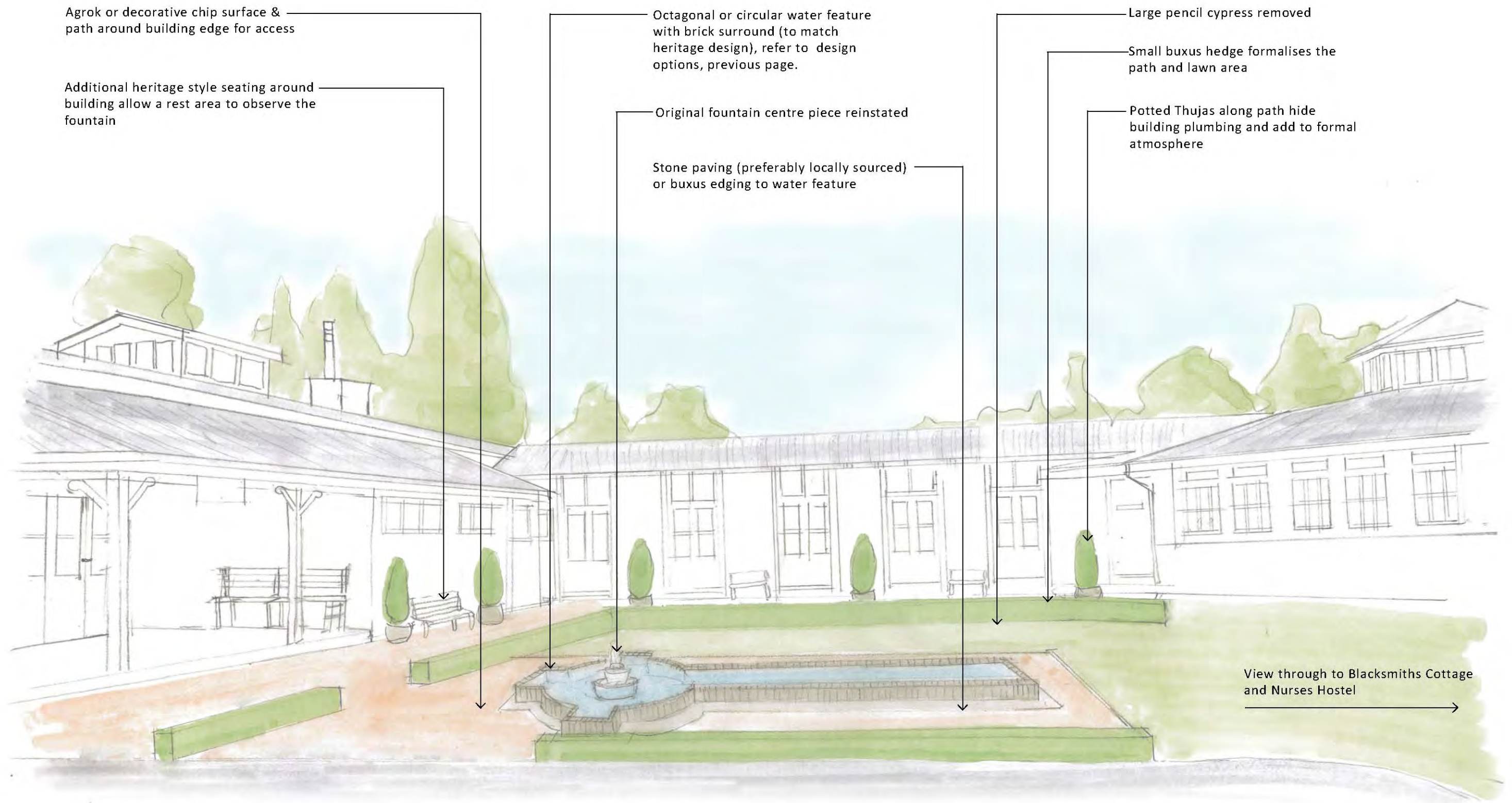


Illustration of Option 1. Circular pool and extension (as original) with paving + compacted aggregate surround, looking south to Soldiers Block