

HURUNUI DISTRICT COUNCIL

P.O. Box 13 | Amberley | 7441 | 66 Carters Road | Amberley | 7410
Phone 03 314-8816 | Fax 03 314-9181 | Email info@hurunui.govt.nz
Web hurunui.govt.nz | [facebook.com/HurunuiDistrictCouncil](https://www.facebook.com/HurunuiDistrictCouncil)
Skype [hdc_customer_services](https://www.skype.com/en/customer-services) | twitter.com/hurunuidc



PROTOCOL FOR THE TEMPORARY CLOSURE OF HANMER SPRINGS RESERVES AND TRACK NETWORK DURING SEVERE WEATHER CONDITIONS.

May 2023

Prepared by:
Amenities Team
Hurunui District Council

Contents

1. Background.....	3
2. Council Administered Reserves and Recreational Tracks in Hanmer Springs affected by this Protocol.....	3
3. Recreational Track network stakeholders and consultation.....	7
4. Procedure to close Hanmer Springs Reserve and Recreational Tracks.....	9
5. Location of Signage.....	10
5.1 HDC Reserves	
5.2 Recreational Track Network	
6. Procedure for the reopening of the Hanmer Springs Reserves and Recreational Tracks.....	10
7. Delegations in absence.....	11
Appendix 1 – Stakeholder contacts.....	13

1. Background

- From time to time severe weather conditions such as high winds, heavy snow fall and heavy rain may threaten the safety of the public if they access Council reserves and recreational track network.
- The main threats to public safety include falling trees and branches due to high winds or heavy snow, and flooding or slips during heavy rain fall which may prevent access back out to the road(s).
- During such severe weather events, in the interest of public safety the Council may close a reserve or walking track for such time it is safe for the public to re-enter.

2. Council Administered Reserves and Recreational Tracks in Hanmer Springs.

There are many reserves in Hanmer and it is not feasible to restrict access to all of them during weather events. The following reserves present the greatest risk to the public, if kept open during a severe weather event. These reserves are high use areas with a significant number of large trees and / or contain waterways that are likely to flood.

Ahead of a severe weather event, these reserves should be risk assessed and may require a temporary closure.

- Conical Hill Reserve Walkway
- Dog Stream Reserve Walking Tracks, Brook Dawson Park & Tarndale Park
- Amuri Ave Reserve
- Larch Reserve
- Woodlands Reserve & Walkway

The following aerial maps identify the extent of the Reserves.

Figure 1: Conical Hill Walkway



Figure 2: Dog Stream Reserve Walking Tracks & Brooke Dawson Park



Figure 3: Amuri Ave Reserve

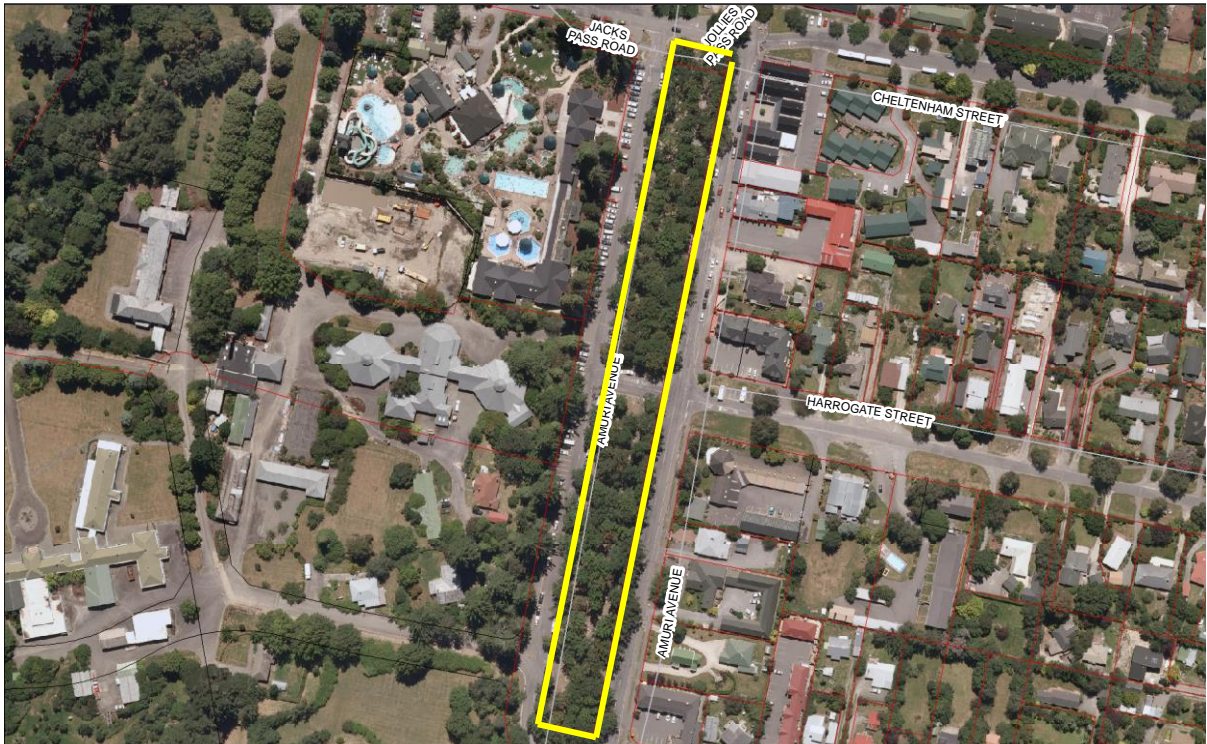


Figure 4: Larch Reserve



Figure 5: Woodland Reserve & Walkway



3. Recreational Track Network Stakeholders and Consultation

The Hanmer Springs Recreational Track Network covers a larger area and involves a number of stakeholders.

Stakeholders with an interest in the Reserves and Track Network include:

- Hurunui District Council (HDC)
- Department of Conservation (DOC)
- Matariki Forest (MF)
- Hanmer Springs Track network group (TNG)
- Hanmer Heritage Forest Trust (HHFT)

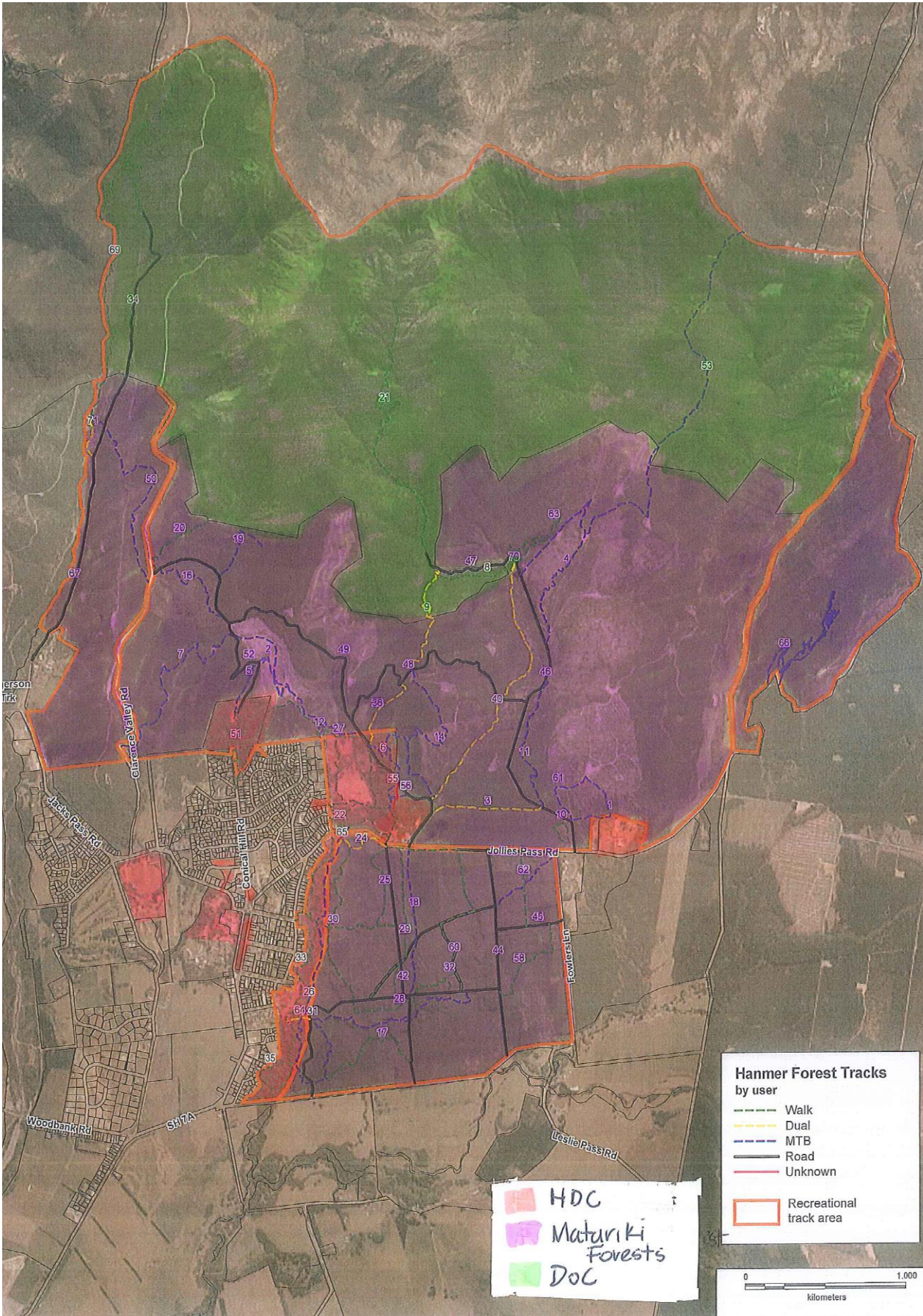
HDC Maintenance Supervisor, the HSCB Chair & TNG Chair will initiate and action the closure of relevant reserves and tracks during severe weather events. Stakeholders will be notified in advance if time permits, however in some instances when a quick decision needs to be made stakeholders will be advised as soon as practical (after initiation).

There are a number of HDC administered Reserves and tracks that link up with others which are administered by the above mentioned stakeholders. These HDC sites are:

- Conical Hill Walkway
- Dog stream Reserve
- Woodland Reserve & Walkway
- Larch Reserve

Appendix 1 lists the stakeholder contacts.

Figure 6: Track Network Stakeholder Administration Areas



4. Procedure to close Hanmer Springs Reserves and Recreational Tracks in Hanmer Springs.

The decision to temporarily close any Council administered Reserves or Recreational Tracks in Hanmer Springs must be a joint decision between the Maintenance Supervisor the Hanmer Springs Community Board Chair and the Track Network Group Chair.

During or prior to a severe weather event the Maintenance Supervisor, HSCB Chair and TNG Chair will assess the potential risk to the public in accessing the Council administered Reserves and Recreational Tracks in Hanmer Springs taking into consideration the following factors:

- The likely duration of the event, the time it will take to implement the protocol and install the signage. (it has in the past taken the Maintenance Team several hours to install signage by which time the event has passed and the risk resolved)
- The type of damage it is likely to cause and the long-term impact of the event. If the risk to the public is deemed high, then a closure is recommended. The Maintenance team will prioritise the installation of the signage at HDC Reserves.

The following triggers may be used as a guideline to commence the closure of any reserve or walking track.

- **High winds** – when winds consistently reach or are predicted to consistently reach 90km per hour or higher. (Strong gale force).
- **Snow fall** – When snow fall reaches the point where it is becoming thick (15-20cm) putting excessive weight on tree branches, increasing the risk of collapse.
- **Heavy rain** – when river/stream levels get to a level where they are at risk of bursting their banks. This is most likely to affect Dog Stream Reserve, Brooke Dawson Park and River Reserve.

If the decision is to close the reserves and or any part of the track network, then the following duties will be conducted:

The Maintenance Supervisor will:

- Advise the Staff at the i-SITE and Hanmer Springs Service Centre/Library of the temporary closure(s), and ensure notification detailing the closure(s) is displayed at these two sites.
- Erect signage at the locations as detailed in Part 5.1 of this protocol and install danger tape where necessary.

The Hanmer Springs Community Board Chair will:

- Advise the members of the Hanmer Springs Community Board of the temporary closure(s).

The TNG Chair will:

- Action the closure of the Entrances to the Recreational track network at the location detailed in Part 5.2 of this protocol by installing closure signage and closing gates.
- Advise all stakeholders of the closure.

Appendix 1 lists the stakeholder contacts.

5. Sign Locations

Where required, signs will be placed at following locations:

5.1 HDC Reserves

Conical Hill Reserve and Walkway

- At the top of Conical Hill Road at the entrance to the walkway, *and* Acheron Heights
- At the start of Lucas Lane.

Dog Stream Reserve / Brooke Dawson Park / Tarndale Reserve

At entrances off the following roads:

- Bath Street,
- Leamington Street,
- Scarborough Terrace,
- Tarndale Place
- Jollies Pass Road.

Amuri Reserve

- At the main entrances by the Hanmer Springs Thermal Reserves.

Larch Reserve / Woodlands Reserve

- At entrances off Forest View Close *and*
- At entrances off Torquay Terrace.

5.2 Hanmer Springs Recreational Track Network

- At entrances off Jollies Pass Road.
- Update the signage outside the Department of Conservation office.
- Poulson Road by water tanks
- McIntyres Road
- Chatterton Road cattle stop beside the AA camp.
- Update the signage at the Village Green



Closure detail notices will also be displayed at the i-SITE and Hanmer Spring Library.

6. Reopening Procedure

Once the severe weather conditions have passed and the weather is settled, the Maintenance Supervisor Hanmer Springs Community Board Chair and Track Network Group Chair will reconvene and assess the risk to the public.

The Maintenance Supervisor will:

- Check the HDC reserves and Recreational Track network Tracks for fallen trees, hung up branches, track wash outs.
- Notify the TNG Chair of any remedial work required on the track network areas.
- Arrange clearance or remedy identified hazards.
- Remove closure signage once the reserves and tracks are made safe.
- Advise staff and remove notification from the i-SITE and Hanmer Springs Service Centre and Library

The HSCB Chair will:

- Notify the Community Board Members of the reopening progress and confirm once the reserves and tracks have reopened.

The TNG Chair will:

- Notify Stakeholders of the reopening progress and any remedial work required on tracks.
- Arrange the removal of the signage and reopening of gates once all clear is given from the Maintenance Supervisor.

7. Delegations in absence

Position	Delegate if absent
Maintenance Supervisor	Maintenance Officer
Hanmer Springs Community Board Chair Person	Hanmer Springs Community Board Chair nominee
TNG Chair	TNG Chair nominee

Appendix 1 - Stakeholder Contacts:

Department of Conservation

Gavin Collis	Leeann Ellis
Senior Ranger	Operations Manager, North Canterbury
gcollis@doc.govt.nz	lellis@doc.govt.nz
Rangiora Office	Rangiora Office
Mb: 027 222 5549	

Rayonier Matariki Forests

Theo Henderson	Rebecca Coles	Mark Allan
Harvest Planning & Rooding Manager and HTNG Representative	District Forester	Harvest Operations Co-Ordinator
theo.henderson@rayonier.com	rebecca.coles@rayonier.com	mark.allan@rayonier.com
Mb: 0274664131	Mb: 0272247724	Mb:0273101080

Hanmer Heritage Forest Trust

Mark Inglis
 Ph: 03 315 5002
 Mb: 021 639 899
mark@markinglis.co.nz

Track Network Group Chair

Cr Mary Hollaway
Mary.hollaway@hurunui.govt.nz

Hurunui District Council

Hanmer Springs Community Board Chair	Maintenance Supervisor
Cr Mary Hollaway	Graeme Shaw
mary.hollaway@hurunui.govt.nz	graeme.shaw@hurunui.govt.nz
	Mb: 027 733 0340