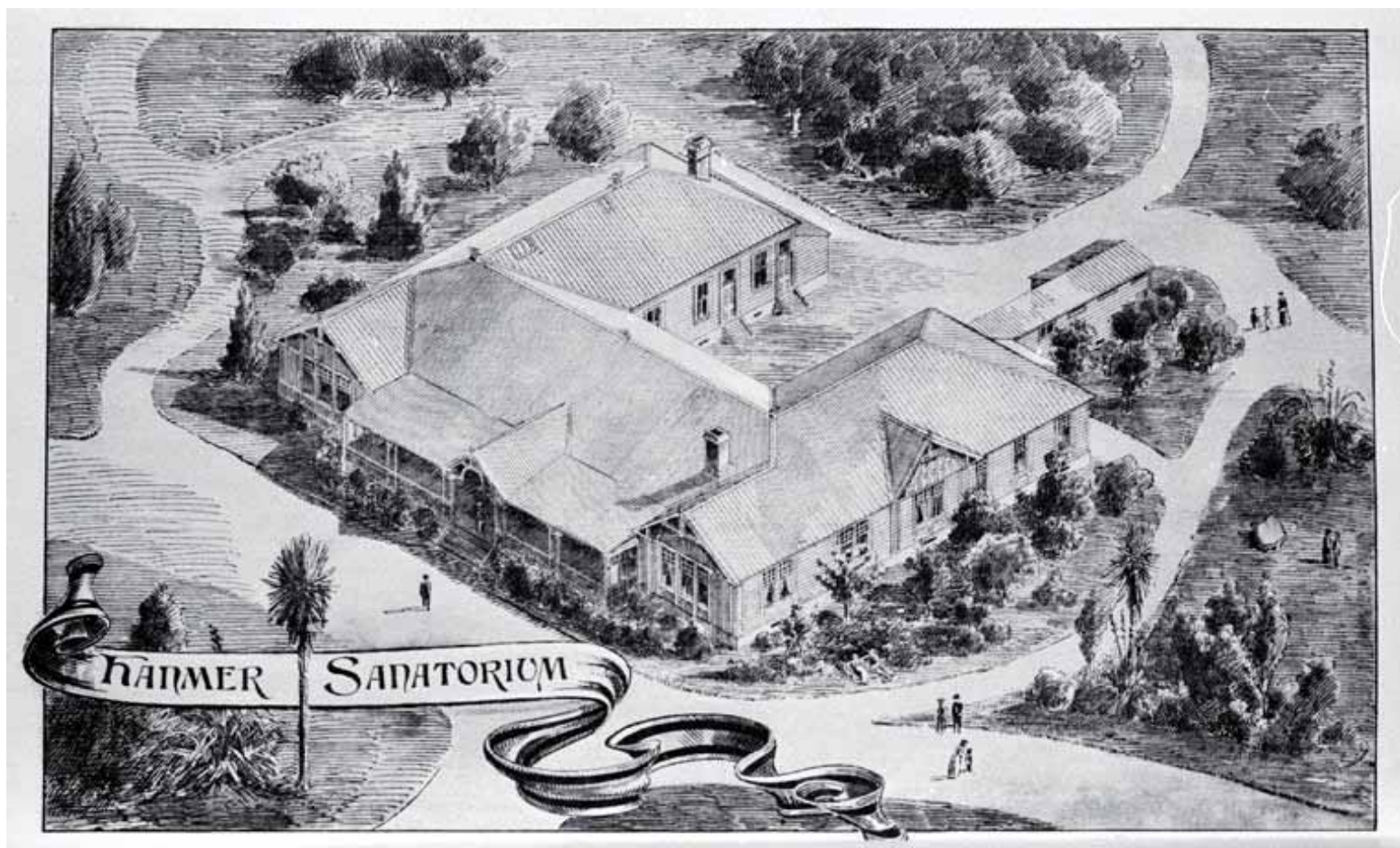


Fig 10. Sanatorium/Spa in c.1898. Source: Appendix to the Journals 1898, vol 1, C1, p111. Negative 1437



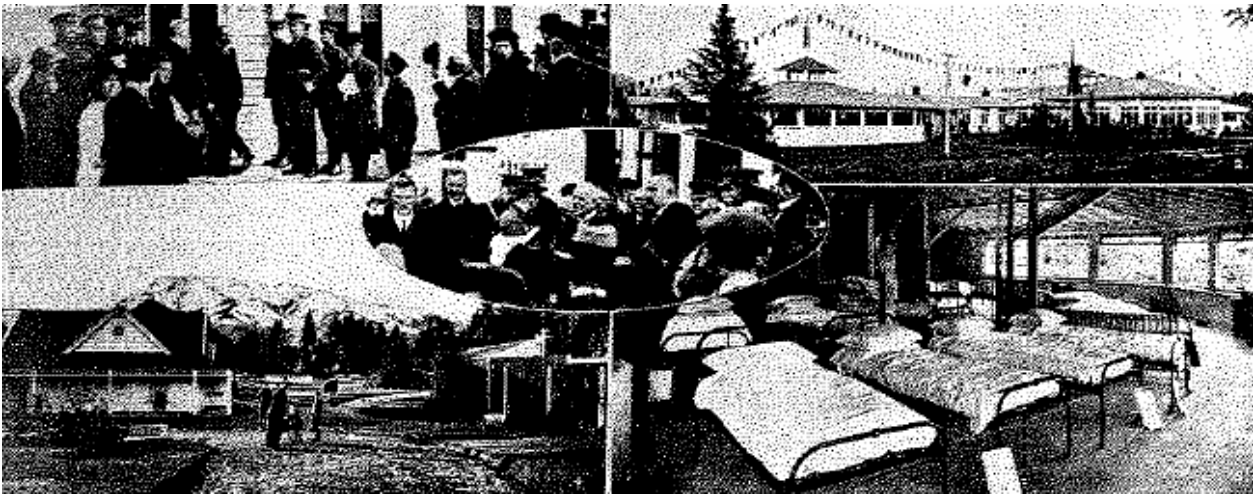


Photograph c1904. From photographic collection held by Dr Robert Crawford. The building to the right is the second bathhouse 1888 (situated where the Gymnasium building now stands), the central building is the c1900-02 bathhouse containing the Turkish Bath, and the building to the left is the first Fountain House, which is now gone but was located to the west of the present Fountain House Block.



After 1930, showing the Women's Massage Block and Bath House at right (now the Gymnasium Building), a central entrance area at centre (now gone), and the earlier bathhouse at left (now gone). Photographed from the collection of photographs held by Dr Robert Crawford.

Figs 11.



Copied from Silverson, page121. Soldiers Block opening top left, right and centre. Arrangement of beds in Octagonal wards (note no glazing in window space).

Fig 16.



Gymnasium Building. East elevation.



Gymnasium Building, Roof of eastern end in foreground, with ventilators, and roof of block with cubicles shown offset at rear.

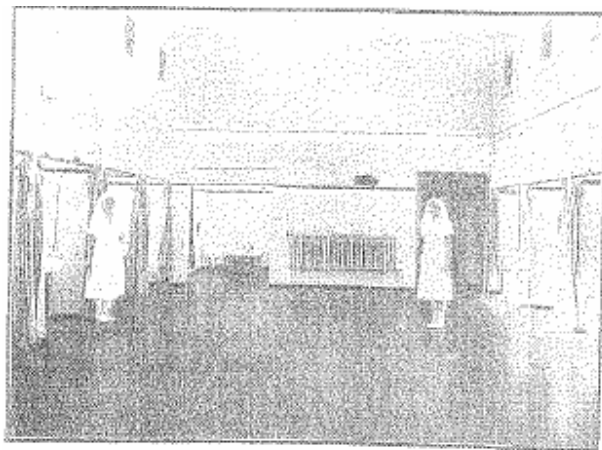


Gymnasium, west and south elevations. Photo June 2004.

Fig 12.



Gymnasium with cubicles



PART OF MASSAGE DEPARTMENT, QUEEN MARY HOSPITAL.

Photograph of the same room, as printed in the 1933 Centennial Publication: Hanmer Springs 1883-1933: 50 Years of Progress, page 12

Fig 13.



Morgue



Ventilation opening on interior (tongue in groove) wall of Morgue

Fig 14.



Central administration wing of Soldier's Block



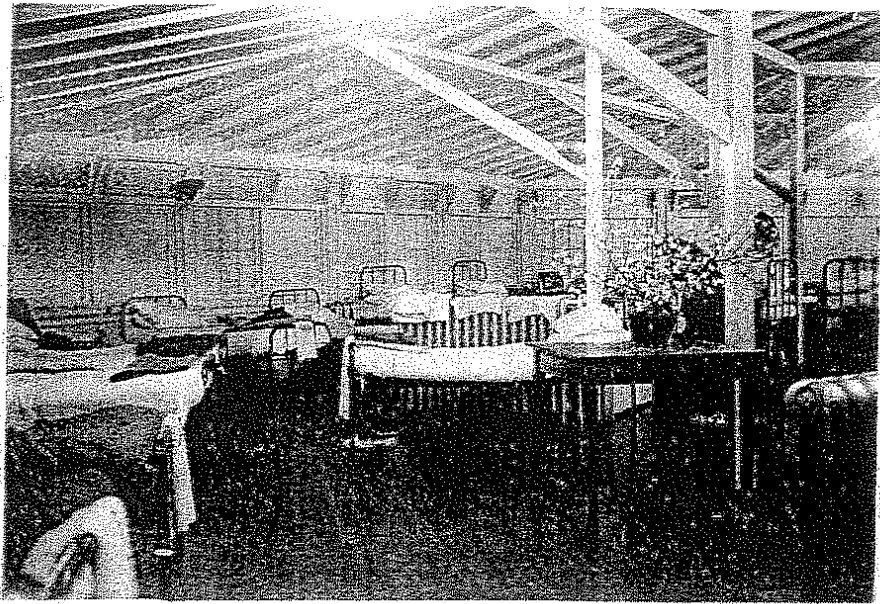
Interior central wing, Soldiers Block



Interior western octagonal ward.

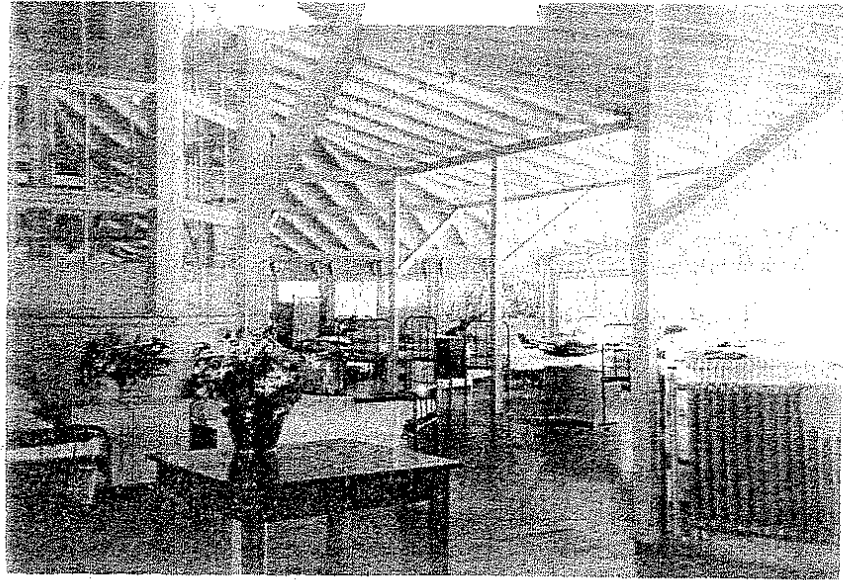


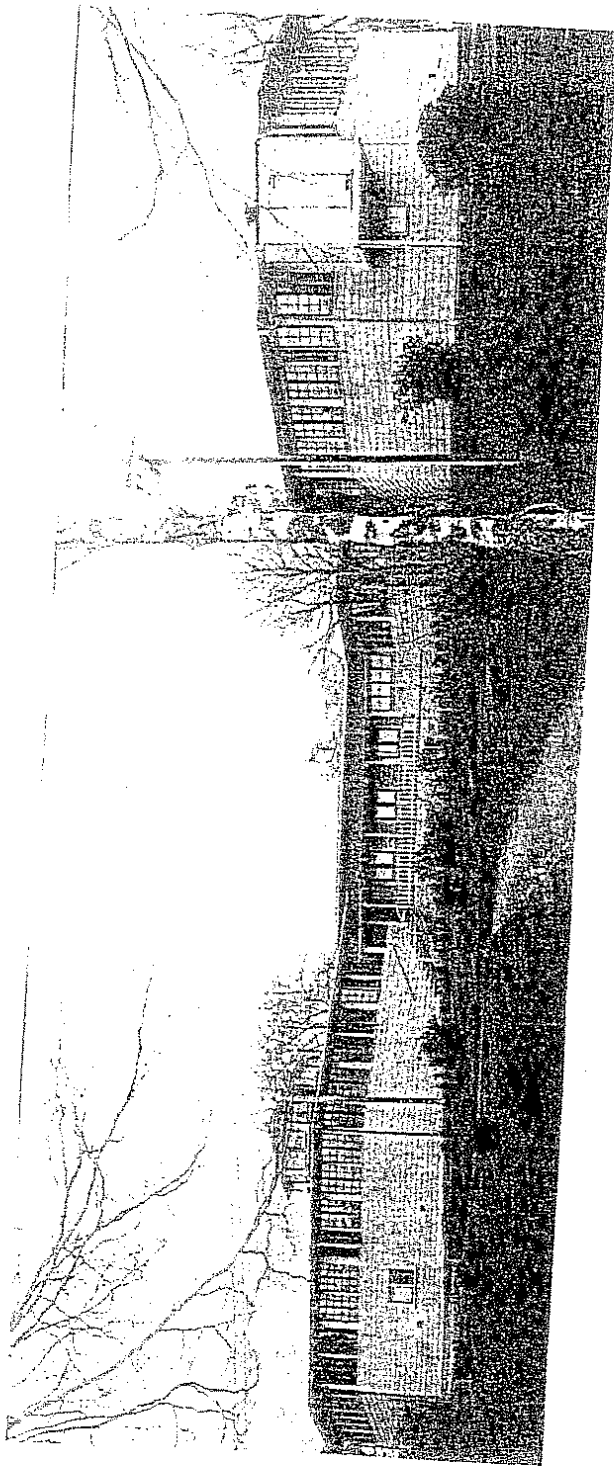
Soldiers Block Opening Day 1916, from collection of photographs held by Dr Robert Crawford.



INTERIOR
OF
SOLDIERS' BLOCK
QUEEN MARY
HOSPITAL
DURING
World War 2.

Essentially the
same in 2003.





ANZAC and Suvla wards at King George V Hospital, Rotorua
Children's Health Camp Road

Fig. 19 King George V Hospital, Rotorua.



Chisholm Block, June 2004



Open verandah on north elevation of east 'butterfly' wing, June 2004.



Interior large room at Chisholm Ward, June 2004.



Corridor, Chisholm Block, photo June 2004.

Figs 20.



Fever (Chest) Ward at Wellington Hospital. Recent photo by Ian Bowman.
This building has similarities to the Chisholm Block.



Nurses Home



Staircase in Nurses Home



Photograph of Nurses Home from the collection of photographs held by Dr Robert Crawford.

Fig 22.



Fountain House from the north-east, June 2004.



Fountain House, part of north elevation, showing main entrance, June 2004.



Fountain House (with fountain at centre of courtyard), photo taken from the north, June 2004

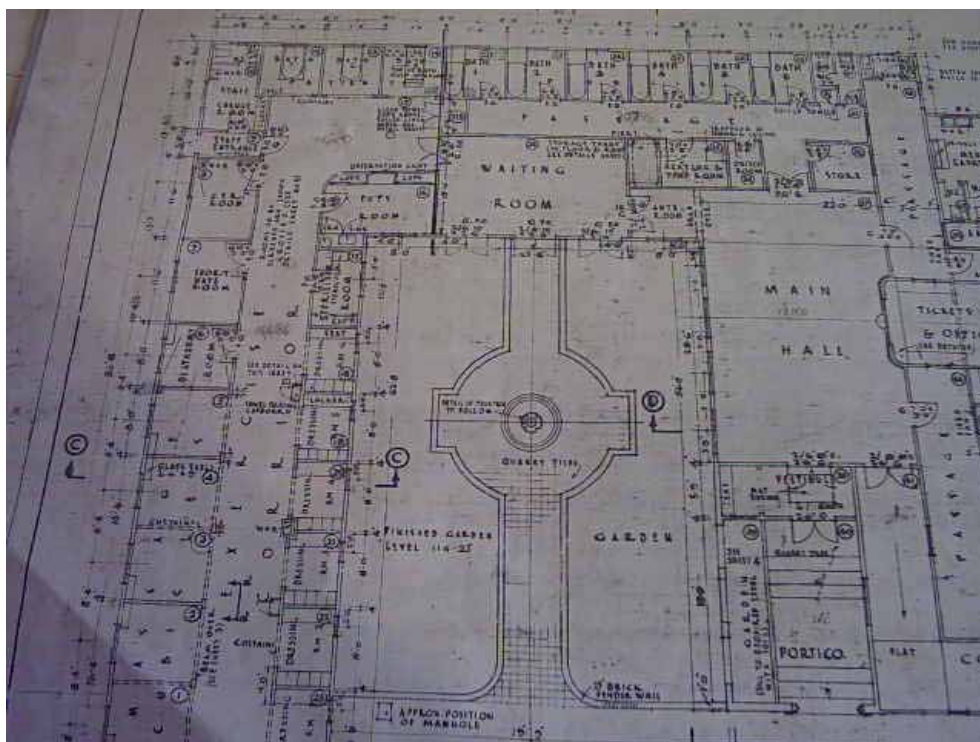
Fig 23.



Fountain House main entrance area, June 2004.



Dog-leg corridor from Gymnasium Building going through to Fountain House, June 2004.



Photograph of part of plan held at Queen Mary Hospital site, dated 1941. Photographed June 2004.



Occupational Therapy Block (now sometimes known as Chapel).



WWII Returned Soldiers doing craftwork by the verandah of the same building above.



c1940s. Occupational Therapy Block?



Single Men's Quarters (current Visitors Centre)



House No. 3 (possibly Medical Superintendent's House)



Main entrance Rutherford Block, on north side.



Entrance Rutherford Block, east side

Fig 26.



Single Men's Quarters (current Visitors Centre)



House No. 3 (possibly Medical Superintendent's House)



Timber shed between large tree trunks in garden



Cow shed



Cow shed front right, concrete incinerator building back left

Fig 28.



Maintenance Engineer's Office



**Detached brick building to the south of the Soldiers Block.
Possibly the meat safe/dairy from the early 20th century?**

Fig 29.



Gasometer, which stands in the public grounds near the entrance to the thermal baths complex, photo June 2004.

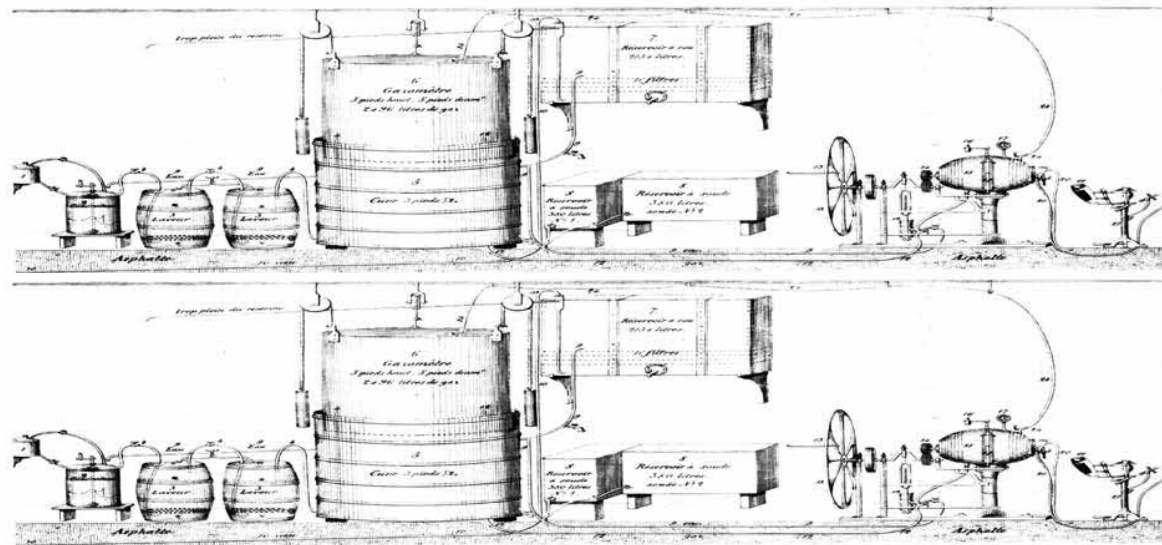


Image of an early Gasometer, as developed by Schwebbe in the late 18th century in Europe.

Fig 30.

Fig 31. Existing Piping

Beside
Fountain
House



Main Pool pipe?

Gymnasium



Interior of
Fountain
House

Fig 32. Views along 'Avenue' in the hospital grounds



Nurses Home



Chisholm Block