

2024 Summer Newsletter

Waste news

Soft plastic drop-off back at Amberley Countdown

Soft plastics are those that can be scrunched in your hand. These can't be accepted for recycling through Council's recycling bags and transfer stations, however, we're thrilled that the soft plastic recycling drop-off is available again at Amberley Countdown. This is perfect for your bread and frozen food bags, dry pet food bags, pasta and rice bags, and other wraps.

Not suitable are compostable bags, biscuit or meat trays, cellophane, etc. For guidance on what soft plastics can be accepted, please visit the Soft Plastics Recycling Scheme website at www.recycling.kiwi.nz/

Contact Council's Waste team

Would you like a visit from Council's Waste team this year to hear more about recycling in Hurunui? We love to help our community groups, schools and pre-schools to reuse, recycle and repurpose. Please email us at recycling@hurunui.govt.nz



PLASTIC BOTTLE LIDS

If your school, pre-school or community group is looking for plastic lids for a project, we have a surplus. Please get in touch by emailing recycling@hurunui.govt.nz

Toxic algae

Toxic algae (cyanobacteria) flourishes in rivers and lakes during warm summer temperatures. In these conditions, it will appear as a dark brown mat and is slimy to the touch.

It can also accumulate along river banks and attracts dogs with its smell. Please be on the lookout as it can be fatal to dogs and harmful to people. If you ingest toxic algae, please ring Healthline on 0800 611 116.

Enter the Hurunui Manu Champs

Register at www.hurunui.govt.nz/hurunuiamanuchamps

HURUNUI MANU CHAMPS

10am Saturday 27 January 2024
MainPower Amberley Pool

HURUNUI District Council
Amberley Pool
COMPASS FM NORTH CANTERBURY

The Hurunui Manu Champs are making a splash at the MainPower Amberley Pool this summer.

Join our manu competition to win prizes and become the Hurunui manu champion. The competition takes place at 10am on Saturday 27 January 2024 at the MainPower Amberley Pool.

The winners of the Hurunui Manu Champs will get free entry to the Z Manu World Championships Ōtautahi Christchurch heat at Jellie Park in February 2024.

To enter the Hurunui Manu Champs, please register at www.hurunui.govt.nz/hurunuiamanuchamps. There are three age group categories: 10-12 years, 13-17 years and 18 years and over.

Experience our reserves these holidays

Did you know that we have 26 playgrounds in Hurunui?



This summer, take a road trip around the district and discover some of

our great greenspaces and reserves. From Queen Mary Hospital Historic Reserve in Hanmer Springs with its heritage buildings and leafy lime tree avenue to Cheviot's Ready Money Trail, there is something for everyone. For a full list of the district's reserves, go to www.hurunui.govt.nz/recreation/parks-reserves

Roadside foliage project for summer

If you're looking for a new project to tackle this summer, why not check your property's roadside foliage to ensure it's not encroaching onto footpaths or the road?

Trees and hedges provide useful shelter and privacy on our properties. Unfortunately, in some cases planting can also cause problems on our roads that may lead to property damage, injury or loss of life. We encourage landowners to design and manage this so they can enjoy the benefits without creating hazards for road users.

We have some tips and guidance on our website on how you can help to maintain the road reserve outside your property.

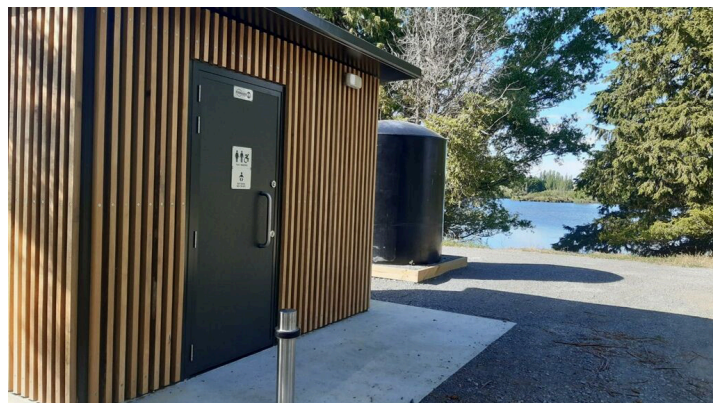
You can have a look at these by going to www.hurunui.govt.nz/plantingonroadreserve

Comfort stops — good for passengers and great driver revivers

The Hurunui District provides some wonderful road trips. If you're on the road this summer, you'll be glad to know we have your comfort stops sorted.

St Anne's Lagoon is a favourite stop-off point for locals and visitors, and now boasts a brand new toilet block, which was partly funded by the government's Tourism Infrastructure Fund (TIF). It's really important for us as your Council to provide good quality and safe services.

Two other toilet facilities partly funded by TIF are in Greta Valley and Rotherham. For a full list of our public toilets, please go to www.hurunui.govt.nz/community/public-toilets



The new toilets at St Anne's Lagoon.

El Niño summer

It's official: NIWA has announced we are in for an El Niño summer.

New Zealand will tend to experience strong, more frequent westerly winds. An El Niño summer also means above-average temperatures, which increases the chance of drier-than-normal conditions and windy weather. This can impact the amount of water available for uses other than essential drinking, cooking, cleaning and stock water.

Drier-than-normal conditions can cause the ground to move, which some of the older pipes don't like and can cause them to break. If this happens, it will disrupt the water supply as sources will have to be switched off while the broken pipe is found and repaired.

Cast your mind back to October when windy weather

disrupted the water network right across the district due to power outages. Only our major pump stations have back-up power and, while we have a few portable generators, we rely on our reservoirs to keep water flowing. In many places this is enough water for only a few hours if power is lost.



Some of these disruptions can mean it takes a day or two to get the water flowing. In summer when demand is at its greatest, do you have enough water storage to keep your operation running for three days? You can read more here: www.hurunui.govt.nz/roading-water/water/three-waters-bylaw-and-policy