



East Ward - Glenmark Reserves



CONTENTS

Clutha Mackenzie Reserve	3
*Fishermans Lane Reserve	4
Glenmark Reserve	5
Happy Valley River Reserve	7
Lambies Road Esplanade Reserve	8
McCaskey Esplanade Reserve	9
Motunau Beach Camping Ground	10
Motunau Beach Clifftop Coastal Reserve	11
Motunau Beach Parade Playground	12
Motunau Beach Parade Reserve	13
Motunau Recreation Reserve.....	14
Omihi Recreation Reserve	15
Quigley Esplanade Reserve	16
Ratray Esplanade Reserve	17
Scargill Motunau Reserve	18
Tavern Drive Reserve	20
Ti Papa Stream Reserve	21
Waipara Memorial Hall	22
Waipara Playground	23

**New reserve.*

Clutha Mackenzie Reserve

Description

Location	Motunau
Classification	Recreation Reserve
Area (hectares)	0.2645
Legal Description	Part Lot 1 DP 12263 Block XV Stonyhurst Survey District
Adjacent Land	Residential properties and Motanau Beach Parade Playground
Facilities	Reserve seating
Acquisition	Gazette ref 1996 p. 2755.

Introduction

Clutha Mackenzie Reserve is located on the south side of Beach Road, Motunau Beach. The reserve is named in memorial after Mr Clutha Mackenzie C.B.E, the former Chairperson of the Hurunui County Council for 37 years.

The reserve underwent further development as a native planting area in 2000 and features a self-closing gate on Beach Road and a walkway through the reserve which links to Motunau Beach Cliff Top Coastal Reserve. From its vantage point, the reserve provides commanding views of the ocean.



Clutha Mackenzie Reserve location map



Clutha Mackenzie Reserve

Specific policies

- That the reserve walkway path be maintained as required.
- That the native vegetation plantings be maintained.
- That the reserve be placed on a regular maintenance schedule.
- That a programme of tree culling be developed to address health and safety issues.
- The erection of buildings on this reserve would significantly detract from the area and is not appropriate.

Future development potential

The Clutha Mackenzie Reserve has been developed to provide an easy native walk to spectacular coastal views. Given that the area has an erosion problem, however, care must be taken to ensure that the existing vegetation is well maintained and replaced as required.

Fishermans Lane Reserve

Description

Location	Motunau
Classification	Recreation Reserve
Area (hectares)	3.44
Legal Description	N34008 GAZ 1952-1359 PT RURAL SEC 41092BLK XV Stonyhurst SD – Motunau Beach Fishermans Work Area
Adjacent Land	
Facilities	
Acquisition	



Fishermans Lane Reserve

Introduction

Further information to come.

Specific policies

- Reclassification from Recreation to Local Purpose Reserve.

Future development potential

That consideration be given to the revocation and disposal of the area marked in fuscina on the map.

Glenmark Reserve

Description

Location	Glenmark
Classification	Recreation Reserve
Area (hectares)	6.0703
Legal Description	Reserve 3971, Block XVI Waikari Survey District
Adjacent Land	Waipara community and farm land
Facilities	Toilet block, tennis courts (1951), scout den building, playground, pump shed and two water storage tanks, community centre
Acquisition	Gazette ref 16-1121 85-1405 Vested in Council in 1989.



Glenmark Reserve location map

Introduction

The Glenmark Reserve is located at the intersection of Church Road and Glenmark Drive, Waipara. The reserve was previously formed part of the Glenmark Estate owned by George Moore, a prominent landowner of the area. In 1915, land for the Glenmark Church, the cemetery and the then domain were subdivided off and donated to the community of Waipara by Annie Townend, daughter of George Moore.

In 1989, the reserve was vested into the control of the Hurunui District Council. The Glenmark Reserve Committee are responsible for the maintenance and development of the reserve.

The reserve is made up of two distinct areas including a large grove of mature oak trees which covers approximately half of the total 6.0703 hectares. The balance of the reserve consists of an open informal sports area with tennis courts, scout den and community centre.



Glenmark Reserve

Specific policies

- That the oak trees be maintained in accordance with the arboricultural report.
- That the grass under the oak tree plantation be cut on a regular basis.
- That amenity trees be planted within the reserve.
- That the existing toilets be maintained to a good standard.
- That signage for the toilets be erected.
- That the driveway and car park be upgraded and provide for special needs.
- That the fencing around the perimeter of the reserve be upgraded.
- That the reserve continue to be beautified appropriately.
- That freedom camping be permitted in accordance with the [Freedom Camping Bylaw](#).
- That a potential frisbee golf course and new playground be developed for future use.
- That community events are encouraged with an approved events permit.

Future development potential

The Glenmark/Waipara District has experienced growth in the viticulture industry, as well as in tourism. As many of these activities are centred around the Waipara Village, it is likely that associated amenities, including the reserve will see increased usage. Great potential exists to further develop a public open space amenity that serves both the local and wider community. In the future it may be appropriate to upgrade the existing toilet facilities.



Glenmark Reserve

Happy Valley River Reserve

Description

Location	Motunau
Classification	Recreation Reserve
Area (hectares)	1.3017
Legal Description	Rural Section 40707 Reserve 5149 Block XV Stonyhurst Survey District
Adjacent Land	Motunau River and Happy Valley Road
Facilities	None
Acquisition	Gazette ref 1963 p.379.



Happy Valley River Reserve location map



Happy Valley River Reserve

Introduction

Happy Valley River Reserve, previously referred to as Bridge Corner Reserve, is located on the north bank of the Motunau River. The reserve includes a corner lot of land extending from the bridge and connects to a marginal strip.

Happy Valley River Reserve was formed on the realignment of Happy Valley Road in the 1960's. It was thought that this riverside area had the potential to be developed as an alternate camping ground, however this plan has never been realised.

Happy Valley River Reserve is an open, grassed area at a bend in the river that is currently being used for grazing. It is an attractive and sheltered location that has been popular in peak seasons for informal camping.

Specific policies

- That the reserve continue to be grazed for maintenance purposes.
- That a formal grazing lease be entered into.
- That informal camping be encouraged on the reserve.
- That the reserve be kept open for white baiting access.

Future development potential

The open grassed contour of the Happy Valley River Reserve lends itself for camping purposes or use as a picnic ground. The reserve is currently used for informal camping in peak seasons. Should demand for camping space increase, this area should be developed as a camping ground.

Lambies Road Esplanade Reserve

Description

Location	Scargill
Classification	Local Purpose Reserve - Esplanade
Area (hectares)	0.039
Legal Description	Lot 2 DP 64916 Block XI Waikari Survey District
Adjacent Land	Farm land
Facilities	None
Acquisition	Taken on subdivision in 1993 Classified by Council 16/05/07.

Introduction

Lambies Road Esplanade Reserve is situated on Lambies Road, Scargill. The reserve is bounded by the Scargill Creek and consists of mainly creek bed and mature willow trees.

The reserve is grazed for maintenance purposes and unlike other esplanade reserves, does not suffer from an erosion problem.



Lambies Road Esplanade Reserve location map



Lambies Road Esplanade Reserve

Specific policies

- That the grazing of the reserve continue.
- That the adjoining land owners be encouraged to manage the reserve in conjunction with their land holdings.

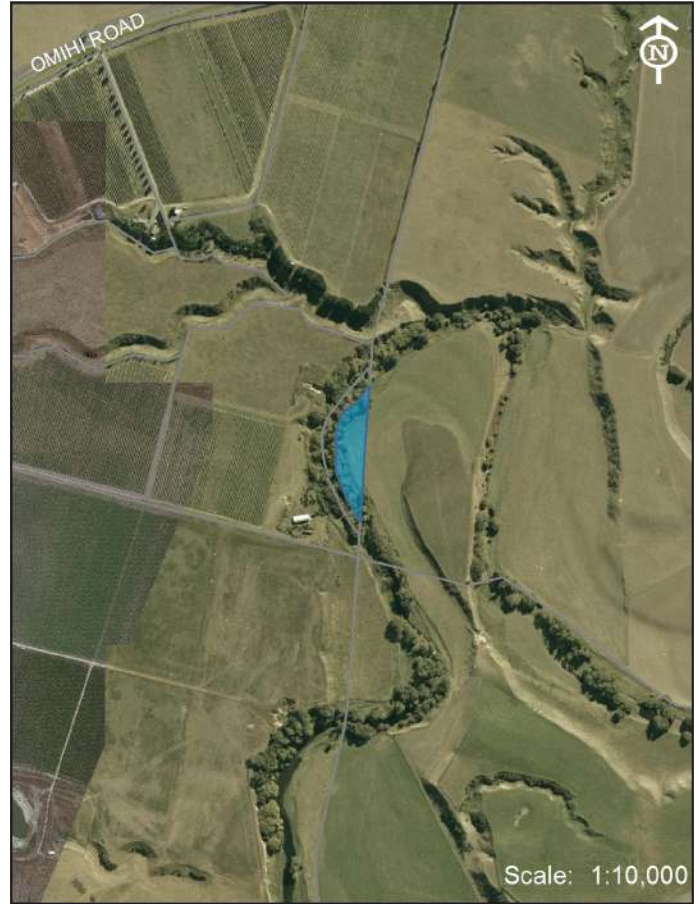
Future development potential

Lambies Road Esplanade Reserve is well vegetated and does not require active management at this time. If desired, the reserve could benefit from some native plantings.

McCaskey Esplanade Reserve

Description

Location	Glenmark
Classification	Local Purpose Reserve - Esplanade
Area (hectares)	0.511
Legal Description	Lot 7 DP 57717 Block Teviotdale Survey District
Adjacent Land	Farm land
Facilities	None
Acquisition	Vested in 1992 on deposit of plan, classified by Council 25/01/07.



McCaskey Esplanade Reserve location map

Introduction

The McCaskey Esplanade Reserve was taken in 1992 on subdivision. The small reserve is bounded by the Omihi Stream and may be viewed from Omihi Road.



McCaskey Esplanade Reserve

Specific policies

- That the adjoining owners be encouraged to manage the reserve in conjunction with their land holdings.

Future development potential

The size and location of the McCaskey Esplanade Reserve is prohibitive of any significant developments. However, any additional native plantings would be welcome on this land.

Motunau Beach Camping Ground

Description

Location	Stonyhurst
Classification	Recreation Reserve
Area (hectares)	0.6298
Legal Description	Reserve 4309 Block XV Stonyhurst Survey District
Adjacent Land	Motunau residential development and Motunau River
Facilities	Toilet block and water supply
Acquisition	Gazette ref 1984 p.5472.

Introduction

The Motunau Beach Camping Ground occupies low-lying land along the south bank of the Motunau River. Since the 1930s this land has been used as an informal campground for visitors and fisherman. An honesty box system for the collection of fees is operated to help maintenance costs.

In response to public demand, the camping ground has been provided with a new toilet block. Access to the campground is from the lower end of Lindsay Terrace. This area is also prone to occasional flooding.



Motunau Beach Camping Ground location map



Motunau Beach Camping Ground

Specific policies

- That the Motunau Beach Camping Ground continue to be upgraded as funds allow for operation as an official campground.
- That amenity trees be planted on the reserve in addition to the existing Macrocarpa and Pine shelter trees.
- That a holding bay for cars, or boat storage, be constructed.

Future development potential

The Motunau Beach Camping Ground is operated as an informal camping ground. With an upgrade of facilities Motunau could operate as an official campground.

Motunau Beach Clifftop Coastal Reserve

Description

Location	Stonyhurst
Classification	Recreation Reserve
Area (hectares)	9.7009
Legal Description	Reserve 4257 4578 4640 5104 Block XV Stonyhurst Survey District
District Plan	13 A26
Notations	
Adjacent Land	Motunau Beach and Fisherman's Reserve
Facilities	Walking tracks, viewing seat
Acquisition	Gazette ref 1960, p 1653

Introduction

The Motunau Beach Clifftop Coastal Reserve is a narrow strip of land that runs along the Pacific Coast edge from the Motunau River mouth to Sandy Bay. Due to the high erosion potential of the cliffs, there is concern about safety along some sections of the existing cliff top walkway. The Canterbury Regional Council monitors the rates of erosion in this area, and the indicators are that the process of cliff failure or slumping will continue. While this process may deprive walkers the opportunity to traverse the cliff tops in safety, the natural erosion does, however, offer a wealth of fossil debris for collectors.

The recent installation of steps at the end of Sandy Bay Road enables walkers to have direct access to Motunau Beach from the cliff top reserve. The reserve also provides a walking track from Island Terrace to Clutha McKenzie Reserve.



Motunau Beach Clifftop Coastal Reserve location map



Motunau Beach Clifftop Coastal Reserve

Specific policies

- That the Motunau Beach Cliff Top Coastal Reserve be vested in the Hurunui District Council.
- That the Sandy Bay steps and the Island Terrace walking tracks be maintained.
- That additional native vegetation be planted on the reserve as appropriate.
- That existing public barriers be maintained and enhanced to protect public safety.
- That the erosion problem continue to be monitored and managed.
- That a planting programme to slow the erosion process down at Sandy Bay Terrace be developed.

Future development potential

The Motunau Beach Cliff Top Coastal Reserve contains some remnant coastal vegetation consisting mainly of flax and cabbage trees. However, weeds predominate and should be removed prior to any native planting programme.

Motunau Beach Parade Playground

Description

Location	Stonyhurst
Classification	Recreation Reserve
Area (hectares)	0.1384
Legal Description	Lot 2 DP 53475 Block XV Stonyhurst Survey District
Adjacent Land	Motunau Beach Clifftop Coastal Reserve, Motunau Beach Parade Reserve, Clutha MacKenzie Reserve, residential properties
Facilities	Play equipment, picnic tables, shade cloth
Acquisition	Gazette ref 1952, p.1359

Introduction

The Motunau Beach Parade Playground is located opposite the Beach Parade Reserve in Motunau. The proximity offers a playground close to the picnic area across the road. However, children and families have to negotiate the busy road in summer periods with care.

The area is also used on occasion as an event space for activities such as car boot sales and New Year galas etc.



Motunau Beach Parade Playground location map



Motunau Beach Parade Playground

Specific policies

- That the playground be maintained to a high standard.
- That additional playground equipment be installed as funds allow.
- That the native vegetation planting on the northern boundary of the reserve be maintained.
- That a programme for tree removal be developed.
- That community events are encouraged with an approved events permit.

Future development potential

The Motunau Beach Parade Playground is a well developed and maintained play area that is well utilised especially in the summer months. Future development may well involve replacement of play equipment and additional native plantings.

Motunau Beach Parade Reserve

Description

Location	Stonyhurst
Classification	Recreation Reserve
Area (hectares)	0.1629
Legal Description	Reserve 5147 Block XV Stonyhurst Survey District
District Plan	T68
Notations	
Adjacent Land	Motunau Beach Clifftop Coastal Reserve, Motunau Beach Parade Playground Reserve
Facilities	A boat launch, parking area, shower/changing shed, picnicking areas and petanque area
Acquisition	Gazette ref 1984 p.5472.

Introduction

Motunau Beach Parade Reserve, otherwise known as Fisherman's Reserve is situated along the foreshore of the Motunau River mouth adjacent to the recreational fishing boat launch area. For practical purposes, the entire foreshore area is treated as reserve land. This reserve constitutes a significant part of the Motunau River mouth landscape, with views of sandstone cliffs and dunes opposite, and Motunau Island off shore. Recent developments have included the construction of a shower/changing shed, the installation of barriers around erosion prone areas and the addition of a petanque area.



Motunau Beach Parade Reserve location map



Motunau Beach Parade Reserve

Specific policies

- That amenity plantings be established to clearly define recreational areas.
- That picnic areas be further developed with more seating.

Future development potential

Great potential exists to enhance this high scenic value recreation reserve. Amenity planting along the foreshore could be established to slow down the erosion process.

Motunau Recreation Reserve

Description

Location	Stonyhurst
Classification	Recreation Reserve
Area (hectares)	1.4404
Legal Description	Reserve 5147 Block XV Stonyhurst Survey District
Adjacent Land	Motunau Beach Camping Ground
Facilities	Tennis courts, play area, fire station and helipad for emergency evacuation.
Acquisition	Gazette ref 1984 p.5472.

Introduction

The Motunau Recreation Reserve is centrally located in the hilltop residential area on Lindsay Terrace. It is ideally situated to function as a centre for community recreation and social activities.

The reserve features tennis courts, a basket ball hoop, the community fire shed and some grazed grassed area.



Motunau Recreation Reserve location map



Motunau Recreation Reserve

Specific policies

- That amenity trees be planted.
- That the existing tennis courts be maintained.
- That an adventure play area such as skate board facilities be established for older children's play.

Future development potential

The Motunau Recreation Reserve is ideally suited to be developed as the recreational centre for the Motunau Beach community. The establishment of amenity plantings and recreation equipment would greatly enhance the reserve.

Omihi Recreation Reserve

Description

Location	Glenmark
Classification	Recreation Reserve
Area (hectares)	3.7433
Legal Description	Part Lot 2 DP 13899 Block XVII Waikari Survey District
Adjacent Land	Omihi School
Facilities	Community hall, rugby club, changing shed, tennis club building, play ground and seating.
Acquisition	NZ Gazette 1980 p.95 Vested in HDC as Recreation Reserve NZ Gazette 9/03/2006, p.527.



Omihi Reserve location map

Introduction

Omihi Reserve is located on the intersection of Omihi Road and Reeces Road, Glenmark. The reserve was gifted to the community in 1910 by Mr Bob Little for rugby games.

Omihi Reserve is primarily dedicated to the sporting recreational uses of rugby, tennis and netball. Centrally located, and adjacent to the Omihi School, the Omihi Reserve is the social and sporting centre for the district community.

The Omihi Trust Community Hall is currently leased for use as social clubrooms by the Glenmark Rugby Club.



Omihi Reserve

Specific policies

- That an official easement be created over the existing Omihi Trust Community Hall driveway access to Omihi Reserve.
- That all clubs which occupy the reserve be subject to a lease agreement.
- That planting be maintained in front of the War Memorial.
- That the tennis courts be maintained as appropriate.
- That the playground be maintained as appropriate.

Future development potential

Omihi Reserve is a well used community facility that will continue to be developed as community demand dictates.

Quigley Esplanade Reserve

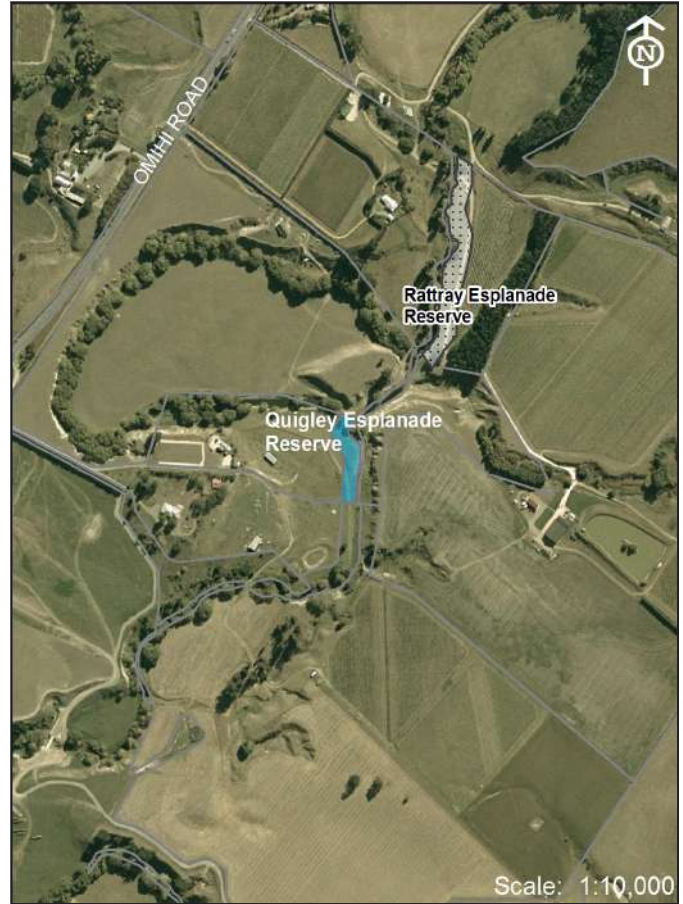
Description

Location	Glenmark
Classification	Local Purpose Reserve - Esplanade.
Area (hectares)	0.288
Legal Description	Lot 4 DP 60622 Teviotdale Survey District
Adjacent Land	Ratray Esplanade Reserve to the north
Facilities	none
Acquisition	Vested in 1993. Classified by Council 16/05/07.

Introduction

The Quigley Esplanade Reserve is a small land locked reserve located off Omihi Road to the south of Ratray Esplanade Reserve.

The reserve is also bounded by the Omihi Stream and was taken on subdivision of the Quigley family property.



Quigley Esplanade Reserve location map



Quigley Esplanade Reserve

Specific policies

- That adjoining owners be encouraged to manage the reserve in conjunction with their land holdings.

Future development potential

The Quigley Esplanade Reserve may benefit from the planting of suitable native species where appropriate.

Ratray Esplanade Reserve

Description

Location	Glenmark
Classification	Local Purpose Reserve - Esplanade
Area (hectares)	0.725
Legal Description	Lot 3 DP 61043 Block XVII Waikari Survey District
Adjacent Land	Farm land and Ratray Esplanade Reserve to the south
Facilities	none
Acquisition	Vested in 1993. Classified by Council 16/05/07.



Ratray Esplanade Reserve location map

Introduction

The Ratray Esplanade Reserve is a small land locked reserve off Omihi Road, Waipara. The reserve was taken on the subdivision of the Ratray family property in 1992.

Bounded by the Omihi Stream, the Ratray Esplanade Reserve is unfenced and features a number of mature willow trees.



Ratray Esplanade Reserve

Specific policies

- That adjoining owners be encouraged to manage the reserve in conjunction with their land holdings.

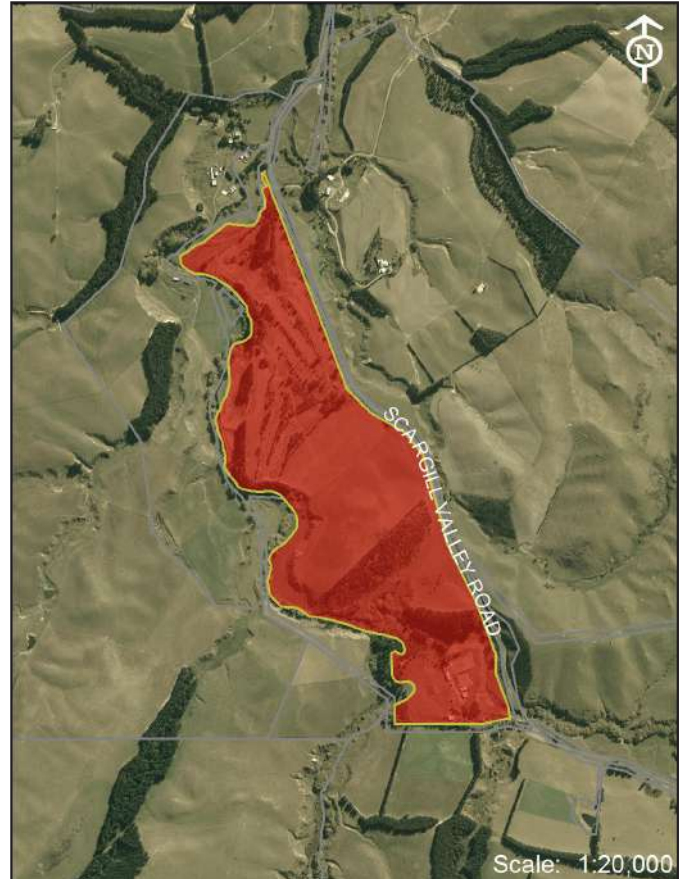
Future development potential

The land would benefit from the planting of suitable native species where appropriate.

Scargill Motunau Reserve

Description

Location	Scargill
Classification	Recrea
Area (hectares)	54.2279
Legal Description	Part Reserve 5140 & 5168 Blocks XI & XV Waikari Survey District
Adjacent Land	Farm land and the Tip Papa Stream
Facilities	A nine hole golf course, tennis courts, cricket oval, sport pavilion (1973), bowling club, squash courts (1980) and water pump.
Acquisition	Reserve 5140 NZ Gazette 14/09/61, p.1417 Reserve 5168 14/03/63, p.344 Classified Recreation Reserve, NZ Gazette 19/05/05, p.1915.



Scargill Motunau Reserve location map

Introduction

The Scargill Motunau Reserve is located on the Scargill Valley Road, Greta Valley. The reserve is a centre for sports, recreation and social activities for the Scargill/Motunau community and includes a sports domain area, nine hole golf course, and a remainder of farmland planted in woodlot and amenity trees.

For the last three decades, the reserve has been managed by the Scargill/Motunau Recreation Reserves Committee (formerly domain board). Built up over many decades as a sport and recreation resource, this reserve is a tribute to the farming community that built it. Amenity improvements have been funded over the

years from returns on farming activities on the reserve, and implemented by local volunteer efforts.

A walkway loop has been established at the reserve, stage one of which leads around the domain beginning at the squash courts, and stage two extending to include farmland and the oak grove to the north. When funds allow, a third stage will extend the walkway to follow Ti Papa Stream down to the golf club.



Scargill Motunau Reserve

Specific policies

- That formal grazing leases be drafted if farming the reserve becomes untenable.
- That picnic areas with tables and gas barbeques be established as required.
- That further amenity trees be planted for shade and framework trees.
- That the Ti Papa Stream be maintained with the removal of rank willow, oak trees and other weeds.
- That restoration of the stream and wetland be ongoing, including native planting along the creek.
- That the reserve be available for exclusive public use days such as festivals.
- That community events are encouraged with an approved events permit.
- That the sports facilities be upgraded as required and as funds allow.
- That display boards be erected near the entrance to the reserve, providing information about the history of the area.
- That the freedom camping area be upgraded by installing grass reinforcement mesh to protect the ground and make it accessible all year round.

Future development potential

The restoration and walkway loop track is a flagship project of the reserve, intended to be open to the public in the future, enhancing the existing golf course, which may be extended as funds and demand dictate.

Tavern Drive Reserve

Description

Location	Scargill
Classification	Recreation Reserve
Area (hectares)	0.5321
Legal Description	Lot 5 DP 42123 Block XV Waikari Survey District
Adjacent Land	Greta Valley Tavern
Facilities	Picnic tables, Greta Valley Welcome Sign, children's playground and toilets
Acquisition	Vested & Classified NZ Gazette 7/06/07 p.1642.

Introduction

The Tavern Drive Reserve, situated beside the Greta Valley Tavern, serves as a “village green” for the Greta Valley community. The reserve is comprised of a small amenity planting adjacent to the Greta Valley Store and the central reserve which features an adventure playground, picnic facilities, and a number of shade trees.

The Tavern Drive Reserve is very well established and maintained to a high standard by the Greta Valley Resident's Association.



Tavern Drive Reserve location map



Tavern Drive Reserve



Tavern Drive Reserve

Specific policies

- That the reserve continue to be maintained.
- That a programme for tree removal be developed.
- That the children's play area be maintained and upgraded as required.
- That community events are encouraged with an approved events permit.

Future development potential

The Tavern Drive Reserve would benefit from upgraded child's play equipment in future years.

Ti Papa Stream Reserve

Description

Location	Scargill
Classification	Recreation Reserve
Area (hectares)	2.2987
Legal Description	Lot 46 DP 40388, Lot 8 DP 42210, Section 2, Survey Office 16940, Section 1, Survey Office 16941
Adjacent Land	State Highway 1
Facilities	Ti Papa Stream culvert
Acquisition	Vested in the Hurunui District Council in 1979. Gazette ref 88-4342.

Introduction

Ti Papa Stream Reserve is a rough area of land originally set aside as a green belt recreation area and buffer zone between Greta Valley township and State Highway 1. However, after some initial planting of gum trees, there has been no further development of the reserve.

Ti Papa Stream Reserve is used primarily for grazing sheep as a method of weed control for the area. The reserve has a small relatively flat grassed terrace area which drops into and follows the natural drainage contours of the Ti Papa Stream to the point where it crosses under Greta Road via a culvert. The terrain is rough and divided by small stream gullies. Vegetation blocks and diverts the course of the stream which typically has a variable seasonal flow.



Ti Papa Stream Reserve location map



Ti Papa Stream Reserve

Specific policies

- That the weed control commence on the reserve especially around the Ti Papa Stream.
- That amenity trees be planted in the reserve on completion of weed removal.
- That seating be installed.
- That the informal grazing lease be formalised with documentation.
- That the reserve be accessible as a natural passive recreation area.
- That walkway links to Scargill Reserve be established.

Future development potential

The site as it exists has visual appeal in a rough pastoral way, however it would be greatly enhanced by well planned landscape improvements.

Waipara Memorial Hall

Description

Location	Glenmark
Classification	Local Purpose Reserve - Community Use
Area (hectares)	0.2023
Legal Description	Sections 12-13 Waipara Township Block 1 Teviotdale Survey District
District Plan Notations	T88
Adjacent Land	Waipara community
Facilities	Waipara Memorial Hall including toilet and kitchen facilities, stage and museum
Acquisition	Hall built in 1953. Gazetted as Local Purpose (community use) reserve 31/08/06, p.3045.

Introduction

The Waipara Memorial Hall is situated on the corner of Johnston Street and Ferguson Avenue, Waipara. The hall was built in 1953 and the War Memorial Plaque lists the fallen in both of the World Wars. The hall is well used by the wider Waipara community.



Waipara Memorial Hall location map



Waipara Memorial Hall

Specific policies

- That the Waipara Hall continues to be maintained to a high standard.
- That the hall kitchen appliances continue to be upgraded as funds allow.
- That the hall floor be upgraded as required.
- That the hall furnishings and building be upgraded as required.
- That the drainage is improved around the car park.
- That the car park is maintained.
- That landscaping and replanting around the hall is carried out.

Future development potential

The Waipara Hall and car park area are well utilised by the wider Waipara community and used as a welfare centre during Civil Defence emergencies.

Waipara Playground

Description

Location	Glenmark
Classification	Recreation Reserve
Area (hectares)	0.1498
Legal Description	Lots 12-13 DP 36671 Block 1 Teviotdale Survey District
Adjacent Land	Waipara train station and railway
Facilities	Play equipment, picnic tables, rubbish bin, picket fence
Acquisition	NZ Gazette 3/11/77, p. 2864 Classified Recreation Reserve, NZ Gazette 19/05/05 p.1915.

Introduction

The Waipara Playground is situated on Glenmark Drive, Waipara and has been re-developed as a play area for children under the age of 12 in the Waipara District.



Waipara Playground location map



Waipara Playground



Waipara Playground

Specific policies

- That the Waipara Playground be maintained to an appropriate standard.
- That playground equipment be updated as required.
- That a programme for tree removal and replacement be developed.
- That a weeding and maintenance programme be developed as requested.

Future development potential

The Waipara Playground is well developed and maintained, however it will need ongoing maintenance and upgrading to ensure it is kept at its current high standard.